

How To Read Your Water Meter

Category: Registers & Endpoints

Type: Interpreter Register



How To Read Your Water Meter

Master Meter Canada is very proud to provide a guide to read your new water meter's LCD register. This award-winning design has many special features that will give you uncompromising service for years to come.

Reading your Meter

Your LCD Register includes an odometer that provides a digital display of total water usage.

When viewing total water usage, the odometer displays reads from left to right.

As shown in *Image 1*:

- The first digit to the right of the decimal point displays every 100 liters.
- The second digit to the right of the decimal point, represents every 10 liters of water used.

The first digit on the left of the decimal point will be 1 cubic meter (1m³), which is 1,000 liters of water.

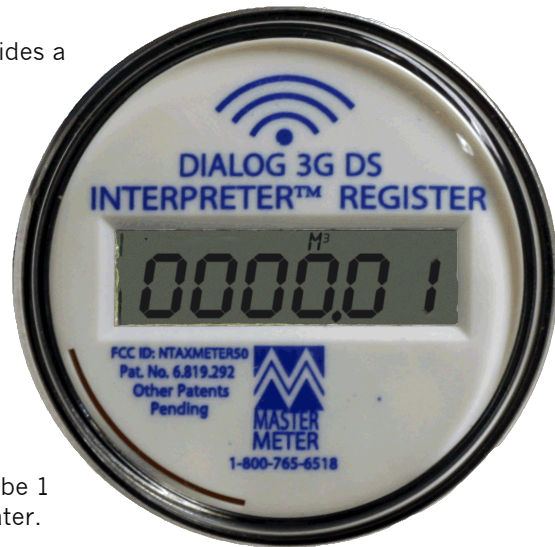


Image 1: Water Usage, Main Screen
(Displayed: 0.01 m³ = 10 litres)



Image 2: Rate of Flow in Liters/Minute

Detecting a Leak

Every 20 to 30 seconds the odometer will switch from displaying water usage readings (*Image 1*), to a rate of flow reading (*the word 'flow' will appear on the screen*).

Rate of flow is expressed in liters per minute, with accuracy to the 1/100 of a liter). (*Image 2*)

If all faucets, showerheads, and other uses of water have been shut off and water flow is still detected, this potentially means that there is a leak somewhere within your plumbing system.

Rate of flow X 1,440 minutes X your rate (\$) =
YOUR LOSS PER DAY (\$)