



Q & A: Thompson Creek Parkland Restoration Project & Controlled Burn – April 2019

Q1: What is the Thompson Creek Parkland Restoration Project?

In May 2018, Haldimand County Council awarded an \$11,550 community partnership grant to the Dunnville Horticultural Society (DHS) to bring the Thompson Creek Parkland Restoration Project to fruition. The Thompson Creek Parkland Restoration Project aims to rehabilitate the wetlands and grassland, create naturalized walkable pathways and establish a Carolinian Arboretum Education Centre/outdoor classroom. Ultimately, the Haldimand County-Dunnville Horticultural Society-Ducks Unlimited Canada partnership project will enhance and preserve the ecosystem while providing residents and visitors with education and recreation-related opportunities.

Q2: What is a controlled burn and why is it being conducted?

Fire is an important natural component in establishing and sustaining open grassland habitats. A prescribed burn is a deliberately set, carefully planned and controlled fire which consumes ground level fuels such as dried leaves, cured grass and forbs, needles and fallen or downed woody debris. The purpose of the Thompson Creek Parkland controlled burn is to clear the site of accumulated debris, halt the growth of invading shrubs and rejuvenate the native tallgrass ecosystem. The burn will also help prepare the lands for the replanting of native wildflower seeds. Land & Forests Consulting has been contracted to oversee the burn with a team of highly-trained, experienced and nationally-certified wildland firefighters.

Q3: Where and when is the controlled burn being conducted?

The Thompson Creek Parkland controlled burn will be confined to and contained by a mowed and tilled path approximately 3m in width. To the west of the burn area is the Dunnville Christian School, Thompson Creek reservoir and Robinson Road. To the east is a residential suburb. To the north is the decommissioned railway line and Thompson Creek schoolyard. To the south, Grandview Lodge. The grey line on the burn area map signifies the burn perimeter and containment boundaries.

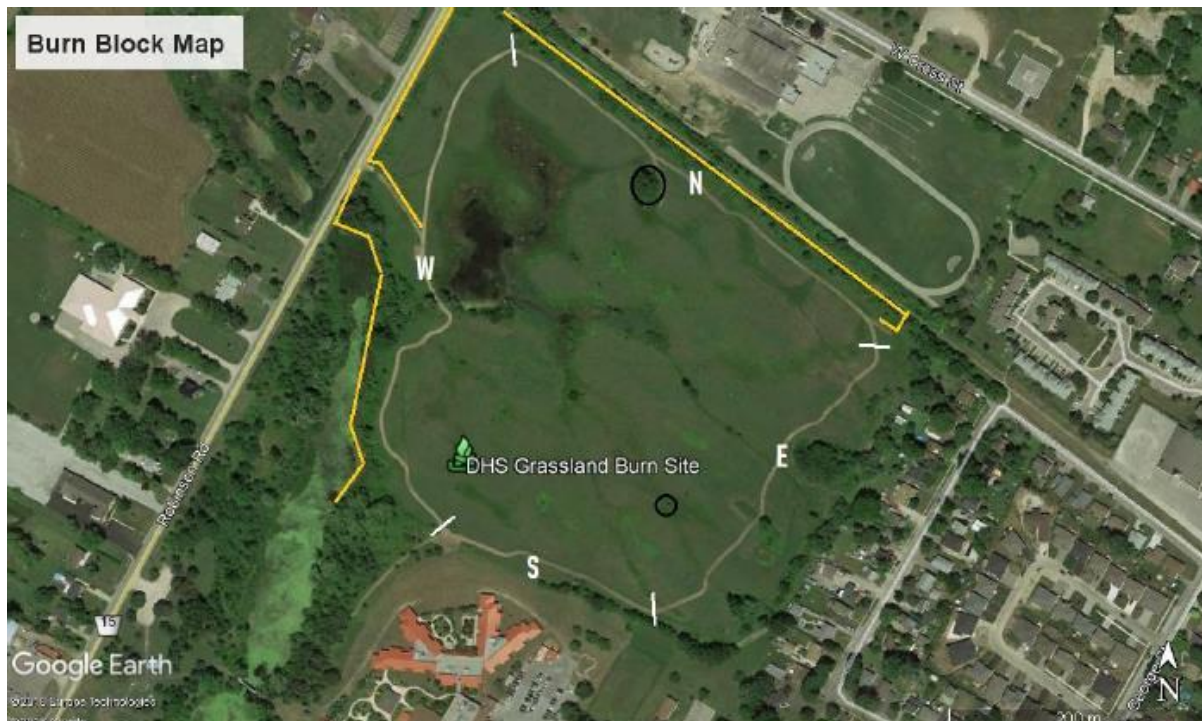
The date of the controlled burn has not yet been confirmed, as weather and wind conditions will dictate the best time. It is preferred that burning takes place during a weekend and if conditions cooperate, the burn will commence in the early afternoon between 12:00 - 12:30pm.

If weather only allows for the burn to take place on a weekday, it will commence in the late afternoon between 4:30 – 5:30pm. In both scenarios, the burn will take a maximum of 1.5 hours to complete.



Q & A: Thompson Creek Parkland Restoration Project & Controlled Burn – April 2019

Haldimand County will post updates regarding the timing of the burn via HaldimandCounty.ca and its social media channels.



Q4: What safety measures/precautions are being taken to ensure the safety of surrounding residents?

The controlled burn scheduled for April 2019 has been carefully planned in consultation with Haldimand County Emergency Services, with public safety at the forefront. Lands & Forests Consulting has been contracted to oversee the burn with a team of highly-trained, experienced and nationally-certified wildland firefighters. Haldimand County Emergency Services will be on site for the duration of the burn, with Dunnville Station 9 on standby with equipment to assist if firefighting efforts are required.

Lands & Forests Consulting (LFC) have successfully completed over 400 incident-free controlled burns across south and south-central Ontario since 1998. LFC has been a leader in the urban burn program for ecological enhancement and sustainability of fire-dependent ecosystems for the last two decades.



Q & A: Thompson Creek Parkland Restoration Project & Controlled Burn – April 2019

Many of those operational burns have been conducted within urban city environments including the City of Toronto (High Park), Oakville, Mississauga, Windsor, Hamilton and Brampton. Organizations such as the Nature Conservancy of Canada, Grand River Conservation Authority and Royal Botanical Gardens are just a handful of LFC's past and current clients.

Q5: Will there be any road closures as a result of the burn?

No roads will be closed while the prescribed burn is underway, however, LFC and Haldimand County Emergency Services staff will keep a close watch on smoke conditions.

Q6: Will smoke produced by the burn affect air quality? Should I be concerned about the smoke?

Every effort will be made to make sure impacts from the controlled burn are minimized, however, if conditions change during the burn, neighbouring residences, schools and businesses may be affected.

To prevent exterior smoke from entering your home, or in the event of exterior smoke entering your home or facility, please:

- Refrain from outside activities like yard work and do not let your children play outside;
- Check the Air Quality Index for your area (available on all weather-related websites). If there is a high risk in your area, it is best to stay indoors;
- Make sure you stay inside if local authorities advise those in your area to do so;
- Close your windows and fireplace dampers to keep out the smoke; and,
- Turn off air conditioners and HVAC systems.

Q7: Can I go and watch the burn while it's taking place?

Only authorized personnel will be permitted on and around the burn site. Spectators will not be permitted at the burn site.