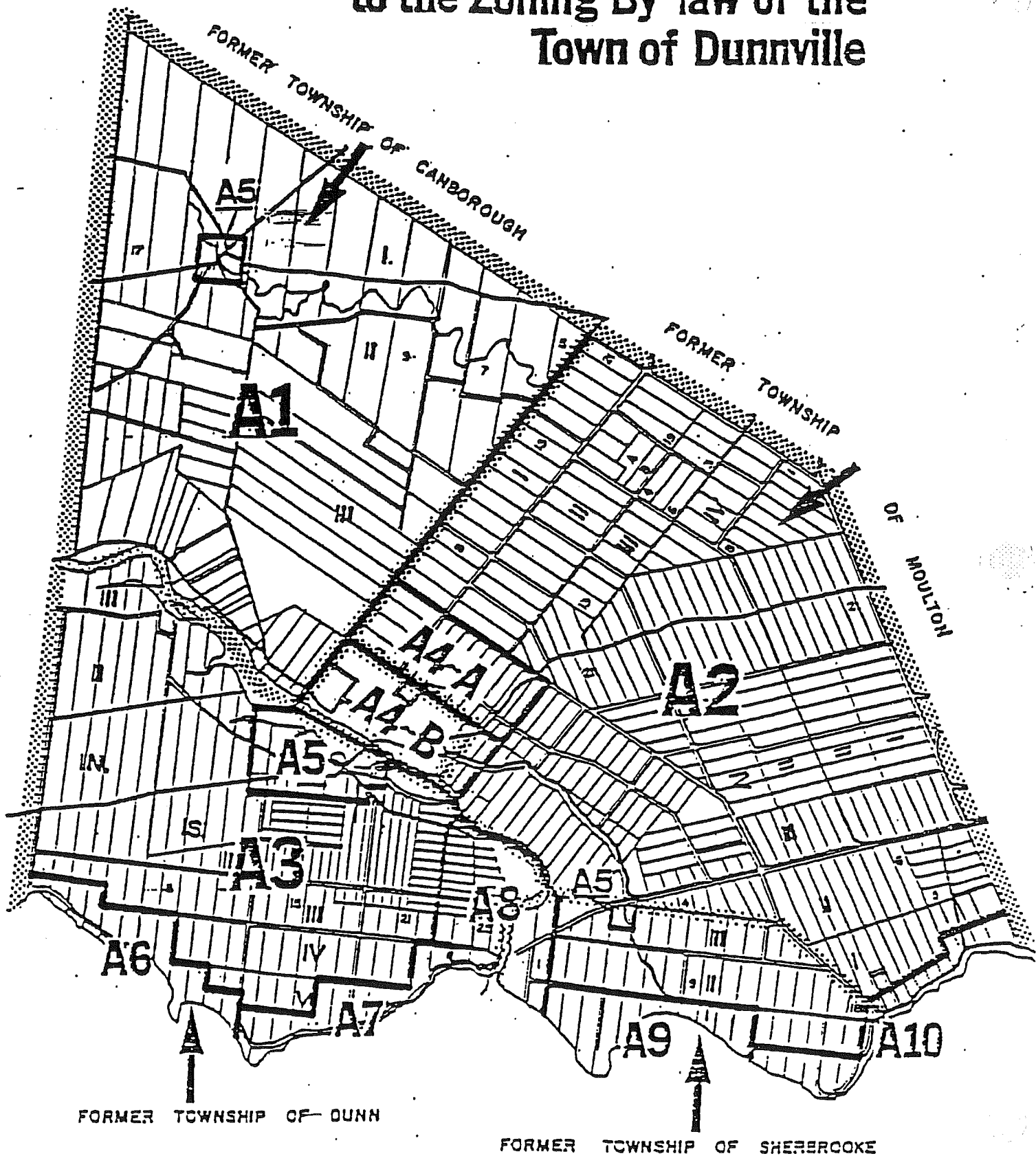


Index of Schedules to the Zoning By-law of the Town of Dunnville



Schedule "A1" to By-law 1-DU 80

REGIONAL MUNICIPALITY OF HALDIMAND-NORFOLK
PART OF THE
Town of Dunnville
PART OF THE FORMER TOWNSHIP OF Canborough

Zone Categories

- RESIDENTIAL ZONES**
- RI URBAN RESIDENTIAL TYPE 1 ZONE
 - R2 URBAN RESIDENTIAL TYPE 2 ZONE
 - * R3 URBAN RESIDENTIAL TYPE 3 ZONE
 - * R4 URBAN RESIDENTIAL TYPE 4 ZONE
 - * R5 URBAN RESIDENTIAL TYPE 5 ZONE
 - * R6 URBAN RESIDENTIAL TYPE 6 ZONE
 - RH HAMLET RESIDENTIAL ZONE
 - RS SEASONAL RESIDENTIAL ZONE

- COMMERCIAL ZONES**
- * C6 GENERAL COMMERCIAL ZONE
 - +++ CS SERVICE COMMERCIAL ZONE
 - * CN NEIGHBOURHOOD COMMERCIAL ZONE
 - +++ CH HIGHWAY COMMERCIAL ZONE
 - * CHA HAMLET COMMERCIAL ZONE
 - +++ CR RURAL COMMERCIAL ZONE
 - * CM MARINE COMMERCIAL ZONE

- INDUSTRIAL ZONES**
- +++ MG GENERAL INDUSTRIAL ZONE
 - +++ ML LIGHT INDUSTRIAL ZONE
 - * MM MARINE INDUSTRIAL ZONE
 - +++ MR RURAL INDUSTRIAL ZONE
 - * MD DISPOSAL INDUSTRIAL ZONE
 - * MX EXTRACTIVE INDUSTRIAL ZONE
 - * MS SPECIAL INDUSTRIAL ZONE

- AGRICULTURAL ZONES**
- A AGRICULTURAL ZONE

- INSTITUTIONAL ZONES**
- * IC COMMUNITY INSTITUTIONAL ZONE
 - * IN NEIGHBOURHOOD INSTITUTIONAL ZONE
 - * IR RURAL INSTITUTIONAL ZONE

- OPEN SPACE ZONES**
- * OS OPEN SPACE ZONE
 - * OST OPEN SPACE-TENT & TRAILER ZONE

- HAZARD LAND ZONES**
- * HL HAZARD LAND ZONE

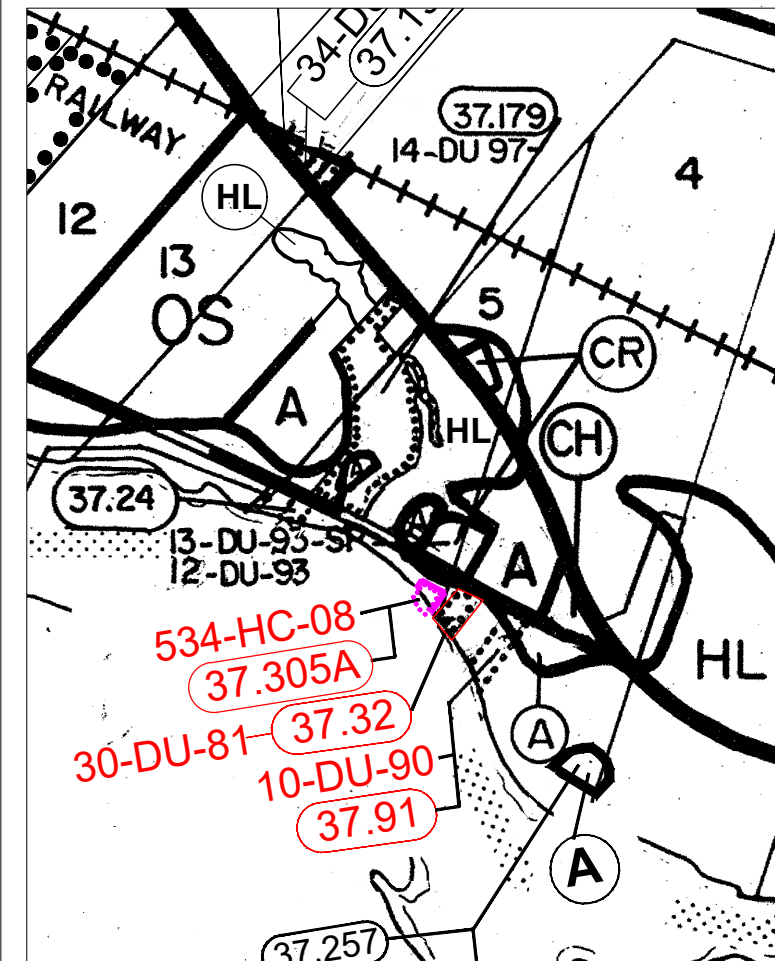
Legend

- BOUNDARY OF FIGURES
- ⊙ PROVINCIAL HIGHWAYS
- REGIONAL ROADS
- TOWN OF DUNNVILLE ROADS
- SCHEDULE BOUNDARY
- ZONE BOUNDARY
- ⊙ BOUNDARY OF LANDS HAVING REFERENCE TO SECTION 37 OF THIS BY-LAW

This is Schedule "A1" to By-law 1-DU 80 passed the 14th day of August 1980

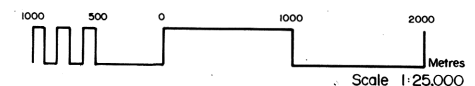
Richard Richardson
Regional Chairman
Malcolm...
Regional Clerk

OFFICE CONSOLIDATION
AUG 2020



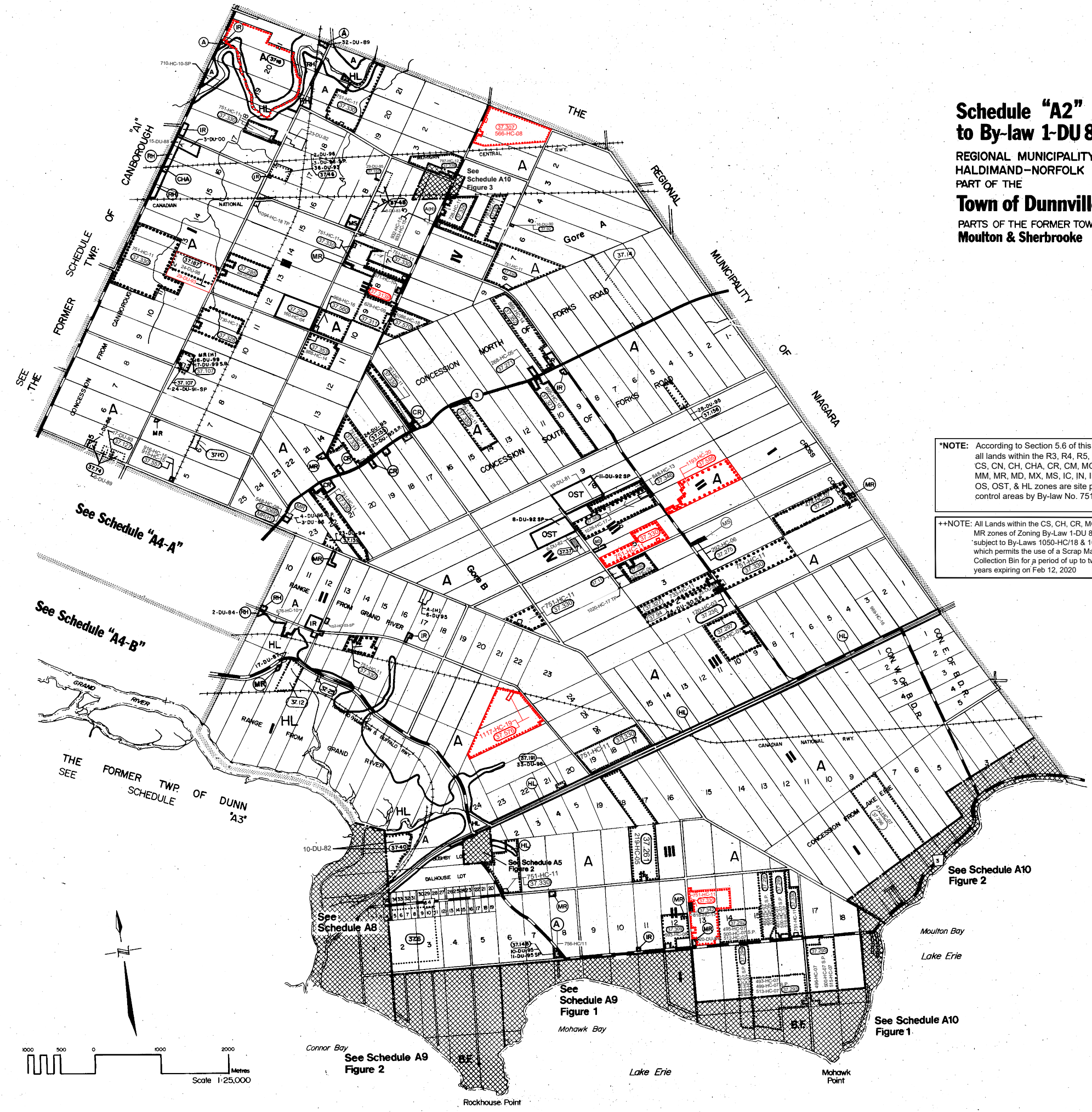
*NOTE: According to Section 5.6 of this By-Law, all lands within the R3, R4, R5, R6, CG, CS, CN, CH, CHA, CR, CM, MG, ML, MM, MR, MD, MX, MS, IC, IN, IR, OS, OST, & HL zones are site plan control areas by By-law No. 751-HC/11

+++NOTE: All Lands within the CS, CH, CR, MG, ML and MR zones of Zoning By-Law 1-DU 80 are subject to By-Laws 1050-HC/18 & 1052-HC/18 which permits the use of a Scrap Material Collection Bin for a period of up to two (2) years expiring on Feb 12, 2020



Schedule "A2" to By-law 1-DU 80

REGIONAL MUNICIPALITY OF
HALDIMAND-NORFOLK
PART OF THE
Town of Dunnville
PARTS OF THE FORMER TOWNSHIPS OF
Moulton & Sherbrooke



Zone Categories

- RESIDENTIAL ZONES**
- R1 URBAN RESIDENTIAL TYPE 1 ZONE
 - R2 URBAN RESIDENTIAL TYPE 2 ZONE
 - *R3 URBAN RESIDENTIAL TYPE 3 ZONE
 - *R4 URBAN RESIDENTIAL TYPE 4 ZONE
 - *R5 URBAN RESIDENTIAL TYPE 5 ZONE
 - *R6 URBAN RESIDENTIAL TYPE 6 ZONE
 - RH HAMLET RESIDENTIAL ZONE
 - RS SEASONAL RESIDENTIAL ZONE

- COMMERCIAL ZONES**
- *CG GENERAL COMMERCIAL ZONE
 - ++*CS SERVICE COMMERCIAL ZONE
 - *CN NEIGHBOURHOOD COMMERCIAL ZONE
 - ++*CH HIGHWAY COMMERCIAL ZONE
 - *CHA HAMLET COMMERCIAL ZONE
 - ++*CR RURAL COMMERCIAL ZONE
 - *CM MARINE COMMERCIAL ZONE

- INDUSTRIAL ZONES**
- ++*MG GENERAL INDUSTRIAL ZONE
 - ++*ML LIGHT INDUSTRIAL ZONE
 - *MM MARINE INDUSTRIAL ZONE
 - ++*MR RURAL INDUSTRIAL ZONE
 - *MD DISPOSAL INDUSTRIAL ZONE
 - *MX EXTRACTIVE INDUSTRIAL ZONE
 - *MS SPECIAL INDUSTRIAL ZONE

- AGRICULTURAL ZONES**
- A AGRICULTURAL ZONE

- INSTITUTIONAL ZONES**
- *IC COMMUNITY INSTITUTIONAL ZONE
 - *IN NEIGHBOURHOOD INSTITUTIONAL ZONE
 - *IR RURAL INSTITUTIONAL ZONE

- OPEN SPACE ZONES**
- *OS OPEN SPACE ZONE
 - *OST OPEN SPACE-TENT & TRAILER ZONE

- HAZARD LAND ZONES**
- *HL HAZARD LAND ZONE

Legend

- BOUNDARY OF FIGURES
- SCHEDULE BOUNDARY
- - - ZONE BOUNDARY
- PROVINCIAL HIGHWAYS
- +— REGIONAL ROADS
- TOWN OF DUNNVILLE ROADS
- 370 BOUNDARY OF LANDS HAVING REFERENCE TO SECTION 37 OF THIS BY-LAW

*NOTE: According to Section 5.6 of this By-Law, all lands within the R3, R4, R5, R6, CG, CS, CN, CH, CHA, CR, CM, MG, ML, MM, MR, MD, MX, MS, IC, IN, IR, OS, OST, & HL zones are site plan control areas by By-law No. 751-HC/11

++NOTE: All Lands within the CS, CH, CR, MG, ML and MR zones of Zoning By-Law 1-DU 80 are subject to By-Laws 1050-HC/18 & 1052-HC/18 which permits the use of a Scrap Material Collection Bin for a period of up to two (2) years expiring on Feb 12, 2020

This is Schedule "A2" to By-law 1-DU 80 passed the 14th day of August 1980

David Richardson
Regional Chairman
Malcolm...
Regional Clerk

OFFICE CONSOLIDATION
AUG 2020

Schedule "A3" to By-law 1-DU 80

REGIONAL MUNICIPALITY OF HALDIMAND-NORFOLK
PART OF THE
Town of Dunnville
PART OF THE FORMER TOWNSHIP OF Dunn

Zone Categories

- RESIDENTIAL ZONES**
- R1 URBAN RESIDENTIAL TYPE 1 ZONE
 - R2 URBAN RESIDENTIAL TYPE 2 ZONE
 - * R3 URBAN RESIDENTIAL TYPE 3 ZONE
 - * R4 URBAN RESIDENTIAL TYPE 4 ZONE
 - * R5 URBAN RESIDENTIAL TYPE 5 ZONE
 - * R6 URBAN RESIDENTIAL TYPE 6 ZONE
 - RH HAMLET RESIDENTIAL ZONE
 - RS SEASONAL RESIDENTIAL ZONE

- COMMERCIAL ZONES**
- * CG GENERAL COMMERCIAL ZONE
 - +++ CS SERVICE COMMERCIAL ZONE
 - * CN NEIGHBOURHOOD COMMERCIAL ZONE
 - +++ CH HIGHWAY COMMERCIAL ZONE
 - * CHA HAMLET COMMERCIAL ZONE
 - +++ CR RURAL COMMERCIAL ZONE
 - * CM MARINE COMMERCIAL ZONE

- INDUSTRIAL ZONES**
- +++ MG GENERAL INDUSTRIAL ZONE
 - +++ ML LIGHT INDUSTRIAL ZONE
 - * MM MARINE INDUSTRIAL ZONE
 - +++ MR RURAL INDUSTRIAL ZONE
 - * MD DISPOSAL INDUSTRIAL ZONE
 - * MX EXTRACTIVE INDUSTRIAL ZONE
 - * MS SPECIAL INDUSTRIAL ZONE

- AGRICULTURAL ZONES**
- A AGRICULTURAL ZONE

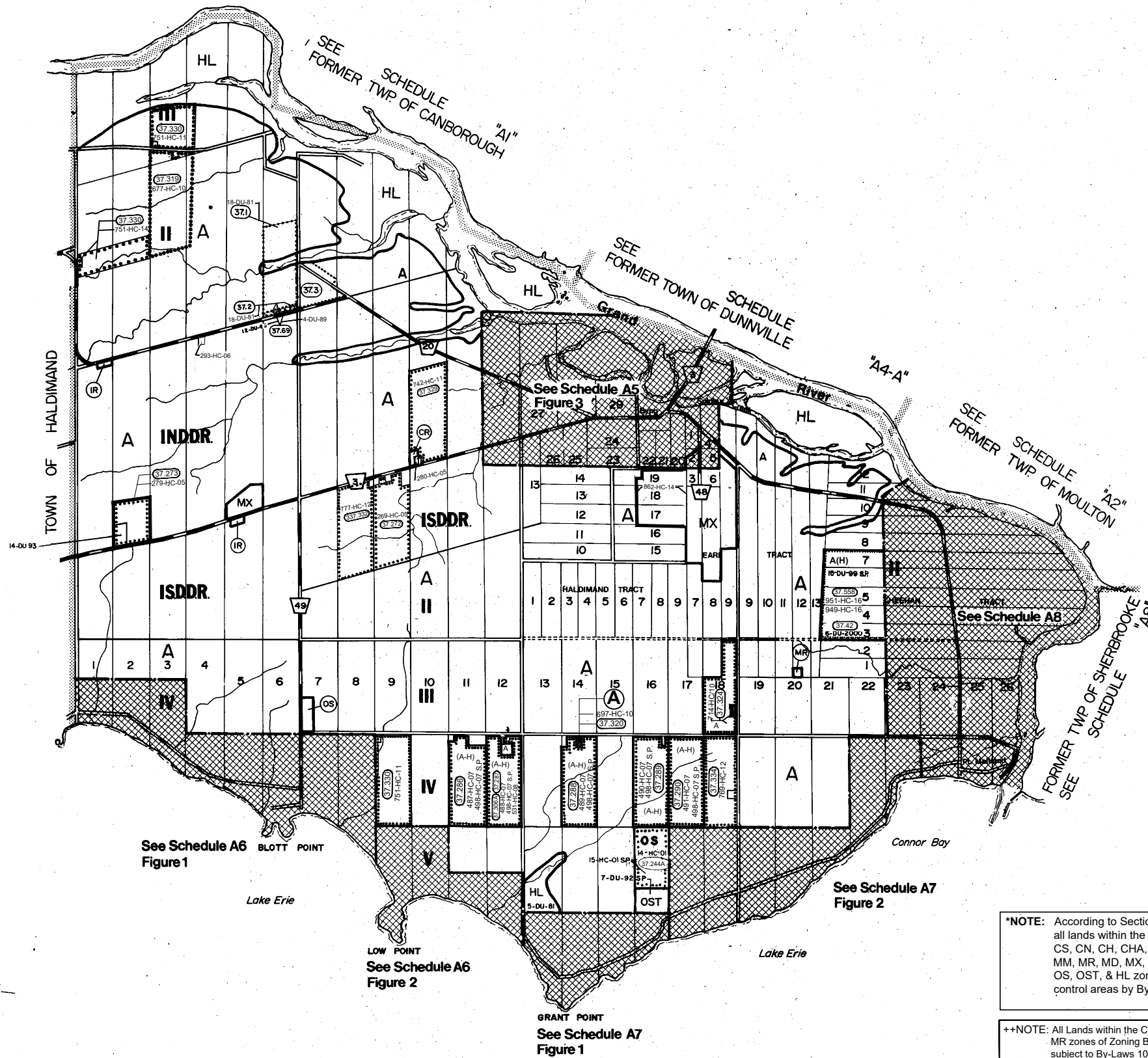
- INSTITUTIONAL ZONES**
- * IC COMMUNITY INSTITUTIONAL ZONE
 - * IN NEIGHBOURHOOD INSTITUTIONAL ZONE
 - * IR RURAL INSTITUTIONAL ZONE

- OPEN SPACE ZONES**
- * OS OPEN SPACE ZONE
 - * OST OPEN SPACE-TENT & TRAILER ZONE

- HAZARD LAND ZONES**
- * HL HAZARD LAND ZONE

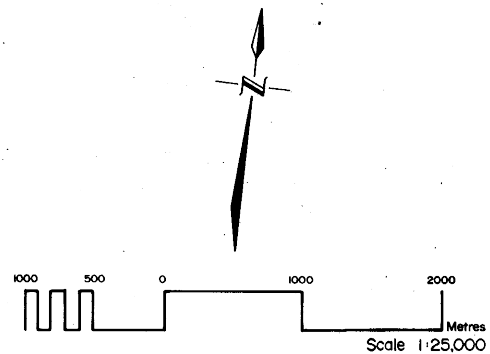
Legend

- BOUNDARY OF FIGURES
- SCHEDULE BOUNDARY
- - - ZONE BOUNDARY
- PROVINCIAL HIGHWAYS
- REGIONAL ROADS
- TOWN OF DUNNVILLE ROADS
- ③ BOUNDARY OF LANDS HAVING REFERENCE TO SECTION 37 OF THIS BY-LAW



***NOTE:** According to Section 5.6 of this By-Law, all lands within the R3, R4, R5, R6, CG, CS, CN, CH, CHA, CR, CM, MG, ML, MM, MR, MD, MX, MS, IC, IN, IR, OS, OST, & HL zones are site plan control areas by By-law No. 751-HC/11

+++NOTE: All Lands within the CS, CH, CR, MG, ML and MR zones of Zoning By-Law 1-DU 80 are subject to By-Laws 1050-HC/18 & 1052-HC/18 which permits the use of a Scrap Material Collection Bin for a period of up to two (2) years expiring on Feb 12, 2020



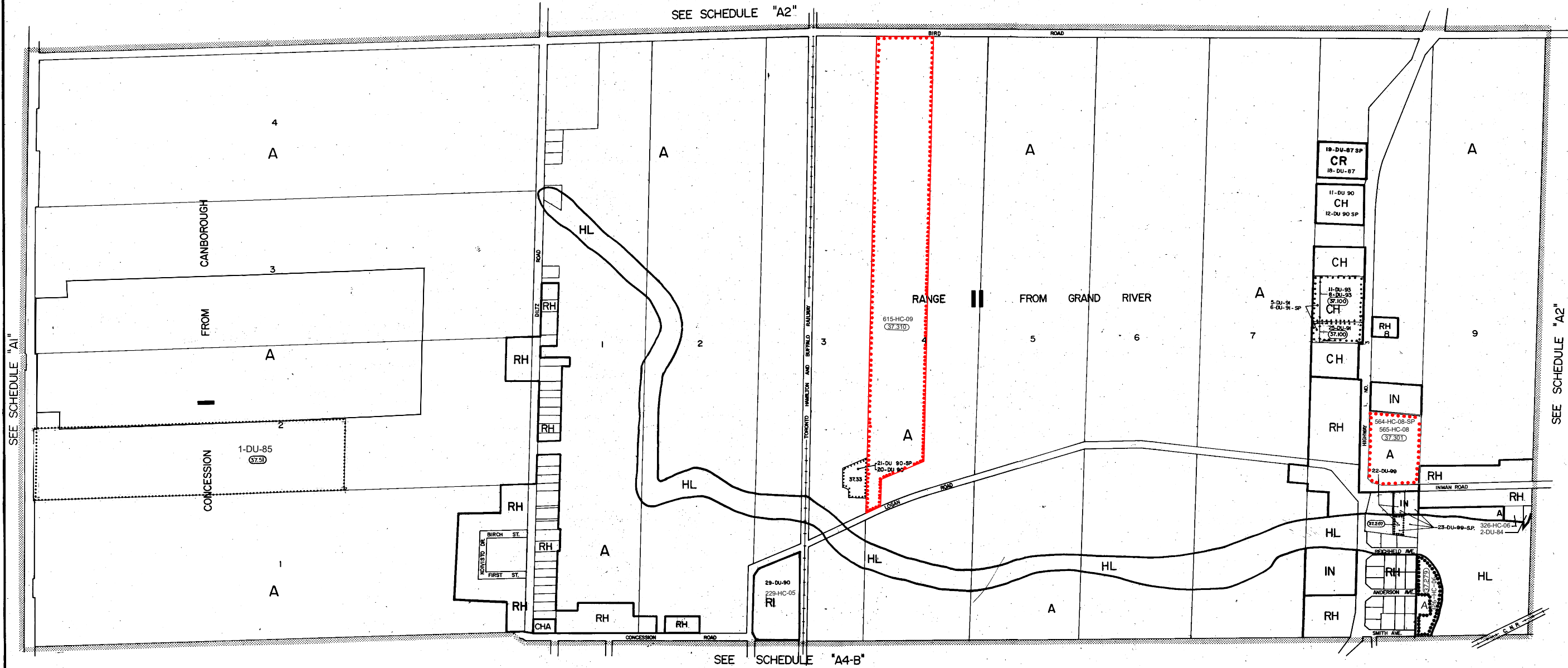
This is Schedule "A3" to By-law 1-DU 80 passed the 14th day of August 1980

Keith Richardson
Regional Chairman
John ...
Regional Clerk

OFFICE CONSOLIDATION
FEBRUARY 2019

Schedule "A4-A" to By-law 1-DU 80

REGIONAL MUNICIPALITY OF
HALDIMAND-NORFOLK
PART OF THE
Town of Dunnville
PART OF THE FORMER TOWNSHIP OF
Moulton



Zone Categories

RESIDENTIAL ZONES

- R1 URBAN RESIDENTIAL TYPE 1 ZONE
- R2 URBAN RESIDENTIAL TYPE 2 ZONE
- *R3 URBAN RESIDENTIAL TYPE 3 ZONE
- *R4 URBAN RESIDENTIAL TYPE 4 ZONE
- *R5 URBAN RESIDENTIAL TYPE 5 ZONE
- *R6 URBAN RESIDENTIAL TYPE 6 ZONE
- RH HAMLET RESIDENTIAL ZONE
- RS SEASONAL RESIDENTIAL ZONE

COMMERCIAL ZONES

- *CG GENERAL COMMERCIAL ZONE
- +++CS SERVICE COMMERCIAL ZONE
- *CN NEIGHBOURHOOD COMMERCIAL ZONE
- +++CH HIGHWAY COMMERCIAL ZONE
- *CHA HAMLET COMMERCIAL ZONE
- +++CR RURAL COMMERCIAL ZONE
- *CM MARINE COMMERCIAL ZONE

INDUSTRIAL ZONES

- +++MG GENERAL INDUSTRIAL ZONE
- +++ML LIGHT INDUSTRIAL ZONE
- *MM MARINE INDUSTRIAL ZONE
- +++MR RURAL INDUSTRIAL ZONE
- *MD DISPOSAL INDUSTRIAL ZONE
- *MX EXTRACTIVE INDUSTRIAL ZONE
- *MS SPECIAL INDUSTRIAL ZONE

AGRICULTURAL ZONES

- A AGRICULTURAL ZONE

INSTITUTIONAL ZONES

- *IC COMMUNITY INSTITUTIONAL ZONE
- *IN NEIGHBOURHOOD INSTITUTIONAL ZONE
- *IR RURAL INSTITUTIONAL ZONE

OPEN SPACE ZONES

- *OS OPEN SPACE ZONE
- *OST OPEN SPACE-TENT & TRAILER ZONE

HAZARD LAND ZONES

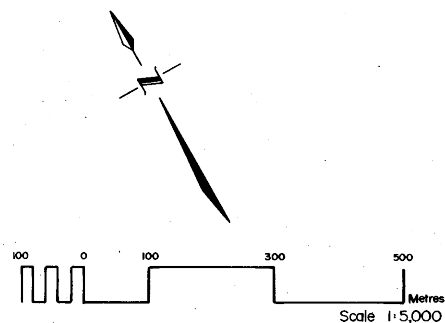
- *HL HAZARD LAND ZONE

Legend

- BOUNDARY OF FIGURES
- SCHEDULE BOUNDARY
- ZONE BOUNDARY
- BOUNDARY OF LANDS HAVING REFERENCE TO SECTION 37. OF THIS BY-LAW

***NOTE:** According to Section 5.6 of this By-Law, all lands within the R3, R4, R5, R6, CG, CS, CN, CH, CHA, CR, CM, MG, ML, MM, MR, MD, MX, MS, IC, IN, IR, OS, OST, & HL zones are site plan control areas by By-law No. 751-HC/11

++NOTE: All Lands within the CS, CH, CR, MG, ML and MR zones of Zoning By-Law 1-DU 80 are subject to By-Laws 1050-HC/18 & 1052-HC/18 which permits the use of a Scrap Material Collection Bin for a period of up to two (2) years expiring on Feb 12, 2020



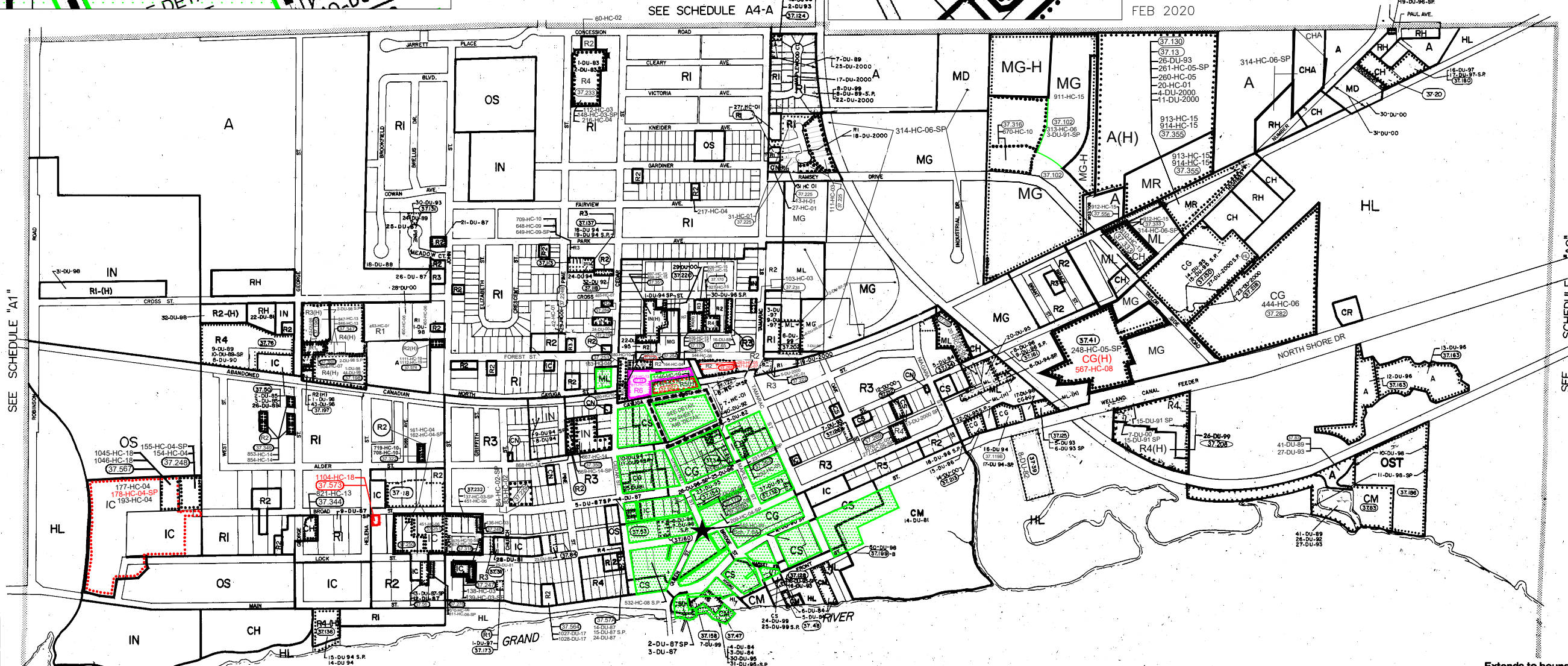
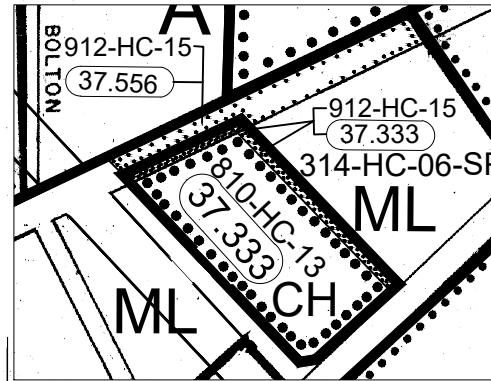
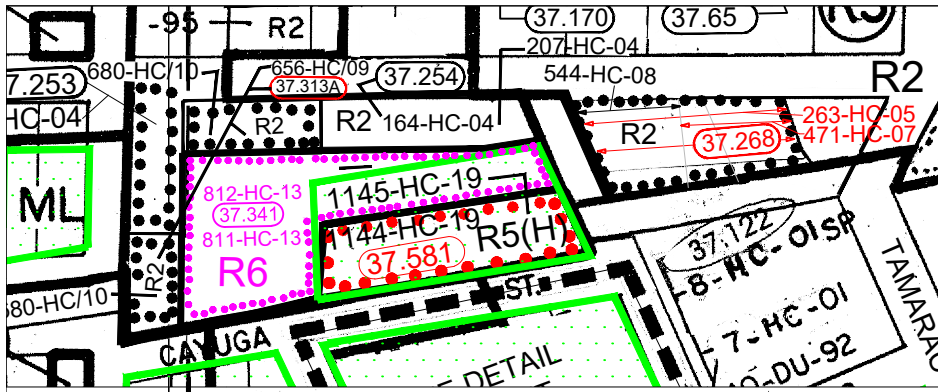
OFFICE CONSOLIDATION
FEB 2019

This is Schedule "A4-A" to By-law 1-DU 80
passed the 14th day of August 1980

Neil Richardson
Regional Chairman
Neil Richardson
Regional Clerk

Schedule "A4-B" to By-law 1-DU 80

REGIONAL MUNICIPALITY OF
HALDIMAND-NORFOLK
PART OF THE
Town of Dunnville
THE FORMER TOWN OF
Dunnville
AND PART OF THE FORMER TOWNSHIP OF
Moulton
OFFICE CONSOLIDATION
FEB 2020



Extends to boundary
of Schedule A3

Extends to boundary
of Schedule A3

Zone Categories

- | | | | |
|--------------------------|-------------------------------|----------------------------|----------------------------------|
| RESIDENTIAL ZONES | | INDUSTRIAL ZONES | |
| R1 | URBAN RESIDENTIAL TYPE 1 ZONE | **MG | GENERAL INDUSTRIAL ZONE |
| R2 | URBAN RESIDENTIAL TYPE 2 ZONE | **ML | LIGHT INDUSTRIAL ZONE |
| *R3 | URBAN RESIDENTIAL TYPE 3 ZONE | *MM | MARINE INDUSTRIAL ZONE |
| *R4 | URBAN RESIDENTIAL TYPE 4 ZONE | **MR | RURAL INDUSTRIAL ZONE |
| *R5 | URBAN RESIDENTIAL TYPE 5 ZONE | *MD | DISPOSAL INDUSTRIAL ZONE |
| *R6 | URBAN RESIDENTIAL TYPE 6 ZONE | *MX | EXTRACTIVE INDUSTRIAL ZONE |
| RH | HAMLET RESIDENTIAL ZONE | *MS | SPECIAL INDUSTRIAL ZONE |
| RS | SEASONAL RESIDENTIAL ZONE | AGRICULTURAL ZONES | |
| COMMERCIAL ZONES | | A | AGRICULTURAL ZONE |
| *CG | GENERAL COMMERCIAL ZONE | INSTITUTIONAL ZONES | |
| **CS | SERVICE COMMERCIAL ZONE | *IC | COMMUNITY INSTITUTIONAL ZONE |
| *CN | NEIGHBOURHOOD COMMERCIAL ZONE | *IN | NEIGHBOURHOOD INSTITUTIONAL ZONE |
| **CH | HIGHWAY COMMERCIAL ZONE | *IR | RURAL INSTITUTIONAL ZONE |
| *CHA | HAMLET COMMERCIAL ZONE | OPEN SPACE ZONES | |
| **CR | RURAL COMMERCIAL ZONE | *OS | OPEN SPACE ZONE |
| *CM | MARINE COMMERCIAL ZONE | *OST | OPEN SPACE-TENT & TRAILER ZONE |
| | | HAZARD LAND ZONES | |
| | | *HL | HAZARD LAND ZONE |

Legend

- BOUNDARY OF FIGURES
- SCHEDULE BOUNDARY
- ZONE BOUNDARY
- BOUNDARY OF LANDS HAVING REFERENCE TO SECTION 37 OF THIS BY-LAW
- ★ OFF STREET PARKING AREA (BY-LAW 642-HC-09)

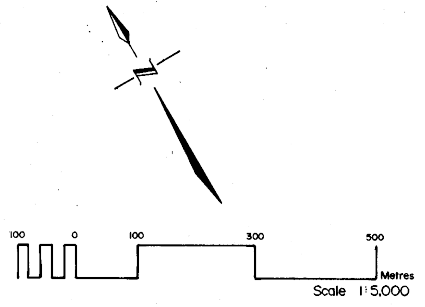
*NOTE: According to Section 5.6 of this By-Law, all lands within the R3, R4, R5, R6, CG, CS, CN, CH, CHA, CR, CM, MG, ML, MM, MR, MD, MX, MS, IC, IN, IR, OS, OST, & HL zones are site plan control areas by By-law No. 751-HC/11

**NOTE: All Lands within the CS, CH, CR, MG, ML and MR zones of Zoning By-Law 1-DU 80 are subject to By-Laws 1050-HC/18 & 1052-HC/18 which permits the use of a Scrap Material Collection Bin for a period of up to two (2) years expiring on Feb 12, 2020

*Extension of Ramsey Road added for administrative convenience for the office consolidation.

This is Schedule "A4-B" to By-law 1-DU 80 passed the 14th day of August 1980

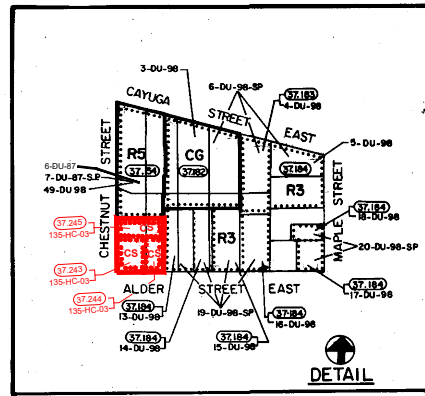
Nick Schauder
Regional Chairman
John Schauder
Regional Clerk



**Schedule "A4-B" ...DETAIL
to By-law 1-DU 80**

REGIONAL MUNICIPALITY OF
HALDIMAND-NORFOLK
PART OF THE
Town of Dunnville
THE FORMER TOWN OF
Dunnville
AND PART OF THE FORMER TOWNSHIP OF
Moulton

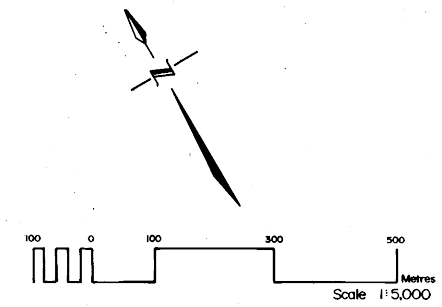
IR



SEE SCHEDULE "A4-B"

SEE SCHEDULE "A4-B"

ndary



Zone Categories

RESIDENTIAL ZONES

- RI URBAN RESIDENTIAL TYPE 1 ZONE
- R2 URBAN RESIDENTIAL TYPE 2 ZONE
- *R3 URBAN RESIDENTIAL TYPE 3 ZONE
- *R4 URBAN RESIDENTIAL TYPE 4 ZONE
- *R5 URBAN RESIDENTIAL TYPE 5 ZONE
- *R6 URBAN RESIDENTIAL TYPE 6 ZONE
- RH HAMLET RESIDENTIAL ZONE
- RS SEASONAL RESIDENTIAL ZONE

COMMERCIAL ZONES

- *CG GENERAL COMMERCIAL ZONE
- ++*CS SERVICE COMMERCIAL ZONE
- *CN NEIGHBOURHOOD COMMERCIAL ZONE
- ++*CH HIGHWAY COMMERCIAL ZONE
- *CHA HAMLET COMMERCIAL ZONE
- ++*CR RURAL COMMERCIAL ZONE
- *CM MARINE COMMERCIAL ZONE

INDUSTRIAL ZONES

- ++*MG GENERAL INDUSTRIAL ZONE
- ++*ML LIGHT INDUSTRIAL ZONE
- *MM MARINE INDUSTRIAL ZONE
- ++*MR RURAL INDUSTRIAL ZONE
- *MD DISPOSAL INDUSTRIAL ZONE
- *MX EXTRACTIVE INDUSTRIAL ZONE
- *MS SPECIAL INDUSTRIAL ZONE

AGRICULTURAL ZONES

- A AGRICULTURAL ZONE

INSTITUTIONAL ZONES

- *IC COMMUNITY INSTITUTIONAL ZONE
- *IN NEIGHBOURHOOD INSTITUTIONAL ZONE
- *IR RURAL INSTITUTIONAL ZONE

OPEN SPACE ZONES

- *OS OPEN SPACE ZONE
- *OST OPEN SPACE-TENT & TRAILER ZONE

HAZARD LAND ZONES

- *HL HAZARD LAND ZONE

Legend

- BOUNDARY OF FIGURES
- SCHEDULE BOUNDARY
- ZONE BOUNDARY
- (37) BOUNDARY OF LANDS HAVING REFERENCE TO SECTION 37 OF THIS BY-LAW

*NOTE: According to Section 5.6 of this By-Law, all lands within the R3, R4, R5, R6, CG, CS, CN, CH, CHA, CR, CM, MG, ML, MM, MR, MD, MX, MS, IC, IN, IR, OS, OST, & HL zones are site plan control areas by By-law No. 751-HC/11

++NOTE: All Lands within the CS, CH, CR, MG, ML and MR zones of Zoning By-Law 1-DU 80 are subject to By-Laws 1050-HC/18 & 1052-HC/18 which permits the use of a Scrap Material Collection Bin for a period of up to two (2) years expiring on Feb 12, 2020

**OFFICE CONSOLIDATION
FEB 2019**

This is Schedule "A4-B" to By-law 1-DU 80 passed the 14th day of August 1980

Regional Chairman
Regional Chairman
Regional Clerk
Regional Clerk

Schedule "A5"FIGURE 1 to By-law 1-DU 80

REGIONAL MUNICIPALITY OF
HALDIMAND-NORFOLK
PART OF THE
Town of Dunnville
PARTS OF THE FORMER TOWNSHIPS OF
Canborough, Sherbrook, & Dunn

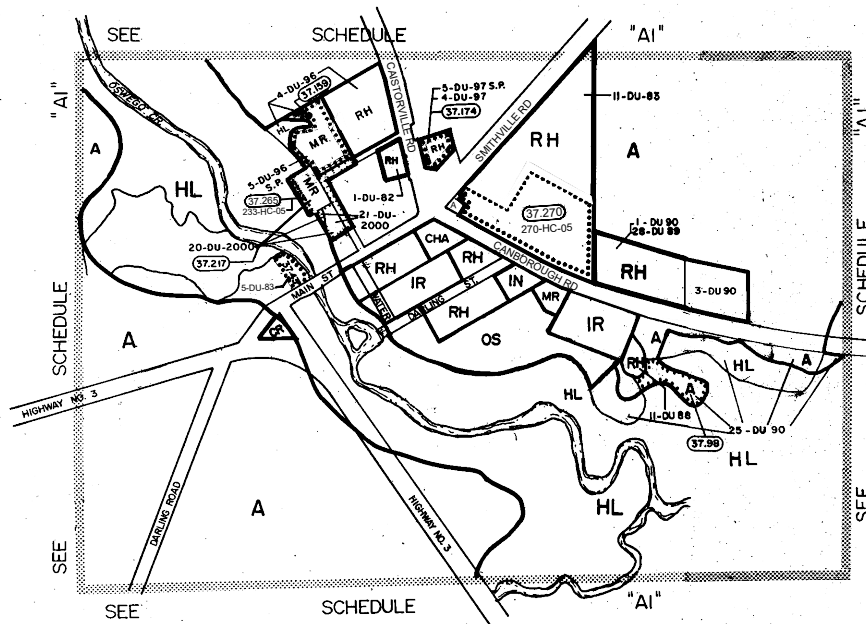


Figure 1
Canborough

++NOTE: All Lands within the CS, CH, CR, MG, ML and MR zones of Zoning By-Law 1-DU 80 are subject to By-Laws 1050-HC/18 & 1052-HC/18 which permits the use of a Scrap Material Collection Bin for a period of up to two (2) years expiring on Feb 12, 2020

Zone Categories

RESIDENTIAL ZONES

- R1 URBAN RESIDENTIAL TYPE 1 ZONE
- R2 URBAN RESIDENTIAL TYPE 2 ZONE
- *R3 URBAN RESIDENTIAL TYPE 3 ZONE
- *R4 URBAN RESIDENTIAL TYPE 4 ZONE
- *R5 URBAN RESIDENTIAL TYPE 5 ZONE
- *R6 URBAN RESIDENTIAL TYPE 6 ZONE
- RH HAMLET RESIDENTIAL ZONE
- RS SEASONAL RESIDENTIAL ZONE

COMMERCIAL ZONES

- *CG GENERAL COMMERCIAL ZONE
- +++CS SERVICE COMMERCIAL ZONE
- *CN NEIGHBOURHOOD COMMERCIAL ZONE
- ++CH HIGHWAY COMMERCIAL ZONE
- *CHA HAMLET COMMERCIAL ZONE
- +++CR RURAL COMMERCIAL ZONE
- *CM MARINE COMMERCIAL ZONE

INDUSTRIAL ZONES

- +++MG GENERAL INDUSTRIAL ZONE
- +++ML LIGHT INDUSTRIAL ZONE
- *MM MARINE INDUSTRIAL ZONE
- ++MR RURAL INDUSTRIAL ZONE
- *MD DISPOSAL INDUSTRIAL ZONE
- *MX EXTRACTIVE INDUSTRIAL ZONE
- *MS SPECIAL INDUSTRIAL ZONE

AGRICULTURAL ZONES

- A AGRICULTURAL ZONE

INSTITUTIONAL ZONES

- *IC COMMUNITY INSTITUTIONAL ZONE
- *IN NEIGHBOURHOOD INSTITUTIONAL ZONE
- *IR RURAL INSTITUTIONAL ZONE

OPEN SPACE ZONES

- *OS OPEN SPACE ZONE
- *OST OPEN SPACE-TENT & TRAILER ZONE

HAZARD LAND ZONES

- *HL HAZARD LAND ZONE

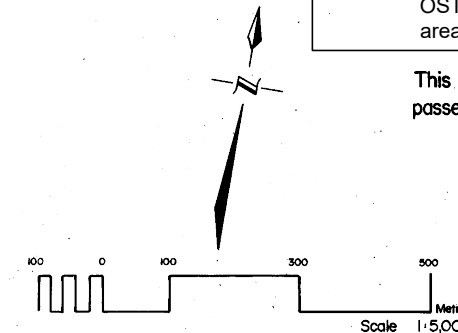
Legend

- BOUNDARY OF FIGURES
- SCHEDULE BOUNDARY
- ZONE BOUNDARY
- (370) BOUNDARY OF LANDS HAVING REFERENCE TO SECTION 37 OF THIS BY-LAW

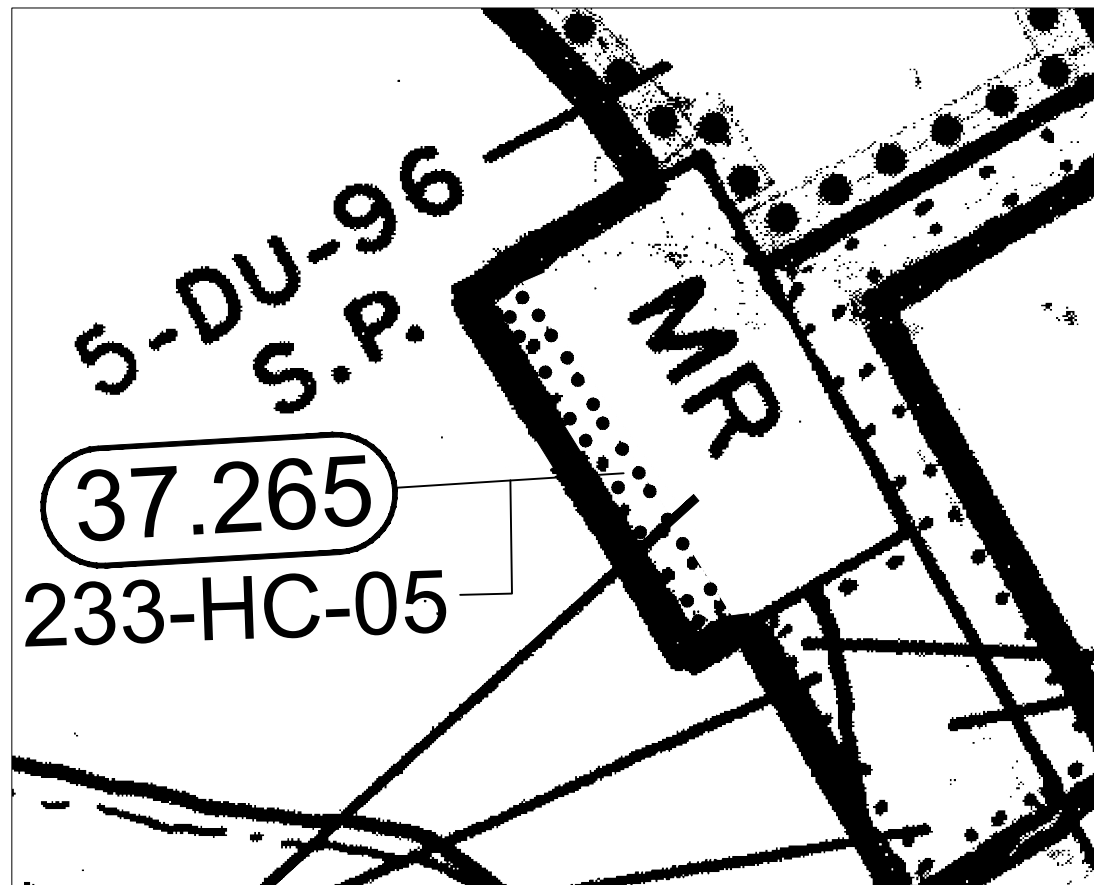
*NOTE: According to Section 5.6 of this By-Law, all lands within the R3, R4, R5, R6, CG, CS, CN, CH, CHA, CR, CM, MG, ML, MM, MR, MD, MX, MS, IC, IN, IR, OS, OST, & HL zones are site plan control areas by By-law No. 751-HC/11

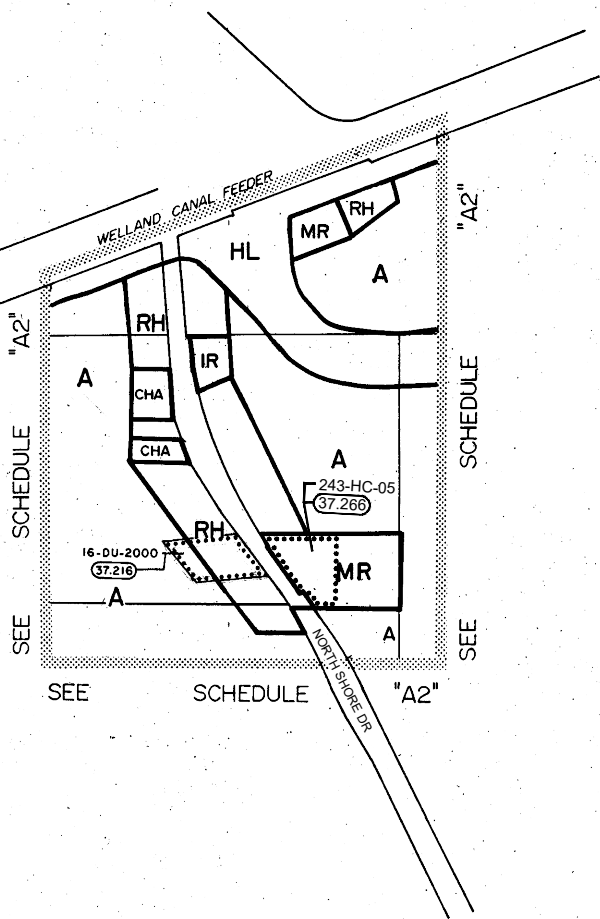
This is Schedule "A5" to By-law 1-DU 80 passed the 14th day of August 1980

Karl Richardson
Regional Chairman
M. Johnson
Regional Clerk



OFFICE CONSOLIDATION
FEB 2019





**Figure 2
Stromness**

Schedule "A5"....FIGURE 2 to By-law 1-DU 80

REGIONAL MUNICIPALITY OF
HALDIMAND-NORFOLK
PART OF THE

Town of Dunnville

PARTS OF THE FORMER TOWNSHIPS OF
Canborough, Sherbrook, & Dunn

Zone Categories

RESIDENTIAL ZONES

- R1 URBAN RESIDENTIAL TYPE 1 ZONE
- R2 URBAN RESIDENTIAL TYPE 2 ZONE
- *R3 URBAN RESIDENTIAL TYPE 3 ZONE
- *R4 URBAN RESIDENTIAL TYPE 4 ZONE
- *R5 URBAN RESIDENTIAL TYPE 5 ZONE
- *R6 URBAN RESIDENTIAL TYPE 6 ZONE
- RH HAMLET RESIDENTIAL ZONE
- RS SEASONAL RESIDENTIAL ZONE

COMMERCIAL ZONES

- *CG GENERAL COMMERCIAL ZONE
- ++*CS SERVICE COMMERCIAL ZONE
- *CN NEIGHBOURHOOD COMMERCIAL ZONE
- ++*CH HIGHWAY COMMERCIAL ZONE
- *CHA HAMLET COMMERCIAL ZONE
- ++*CR RURAL COMMERCIAL ZONE
- *CM MARINE COMMERCIAL ZONE

INDUSTRIAL ZONES

- ++*MG GENERAL INDUSTRIAL ZONE
- ++*ML LIGHT INDUSTRIAL ZONE
- *MM MARINE INDUSTRIAL ZONE
- ++*MR RURAL INDUSTRIAL ZONE
- *MD DISPOSAL INDUSTRIAL ZONE
- *MX EXTRACTIVE INDUSTRIAL ZONE
- *MS SPECIAL INDUSTRIAL ZONE

AGRICULTURAL ZONES

- A AGRICULTURAL ZONE

INSTITUTIONAL ZONES

- *IC COMMUNITY INSTITUTIONAL ZONE
- *IN NEIGHBOURHOOD INSTITUTIONAL ZONE
- *IR RURAL INSTITUTIONAL ZONE

OPEN SPACE ZONES

- *OS OPEN SPACE ZONE
- *OST OPEN SPACE-TENT & TRAILER ZONE

HAZARD LAND ZONES

- *HL HAZARD LAND ZONE

Legend

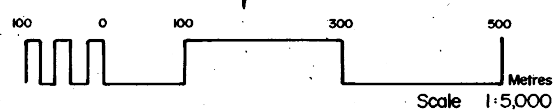
- BOUNDARY OF FIGURES
- SCHEDULE BOUNDARY
- ZONE BOUNDARY
- (37.0) BOUNDARY OF LANDS HAVING REFERENCE TO SECTION 37 OF THIS BY-LAW

++NOTE: All Lands within the CS, CH, CR, MG, ML and MR zones of Zoning By-Law 1-DU 80 are subject to By-Laws 1050-HC/18 & 1052-HC/18 which permits the use of a Scrap Material Collection Bin for a period of up to two (2) years expiring on Feb 12, 2020

*NOTE: According to Section 5.6 of this By-Law, all lands within the R3, R4, R5, R6, CG, CS, CN, CH, CHA, CR, CM, MG, ML, MM, MR, MD, MX, MS, IC, IN, IR, OS, OST, & HL zones are site plan control areas by By-law No. 751-HC/11

This is Schedule "A5" to By-law 1-DU 80
passed the 14th day of August 1980

Neil Richardson
Regional Chairman
Michael Johnston
Regional Clerk



OFFICE CONSOLIDATION
AUGUST 2018

Schedule "A5".....FIGURE 3 to By-law 1-DU 80

REGIONAL MUNICIPALITY OF
HALDIMAND-NORFOLK
PART OF THE

Town of Dunnville

PARTS OF THE FORMER TOWNSHIPS OF
Canborough, Sherbrook, & Dunn

Zone Categories

RESIDENTIAL ZONES

- R1 URBAN RESIDENTIAL TYPE 1 ZONE
- R2 URBAN RESIDENTIAL TYPE 2 ZONE
- *R3 URBAN RESIDENTIAL TYPE 3 ZONE
- *R4 URBAN RESIDENTIAL TYPE 4 ZONE
- *R5 URBAN RESIDENTIAL TYPE 5 ZONE
- *R6 URBAN RESIDENTIAL TYPE 6 ZONE
- RH HAMLET RESIDENTIAL ZONE
- RS SEASONAL RESIDENTIAL ZONE

COMMERCIAL ZONES

- *CG GENERAL COMMERCIAL ZONE
- ++CS SERVICE COMMERCIAL ZONE
- *CN NEIGHBOURHOOD COMMERCIAL ZONE
- ++CH HIGHWAY COMMERCIAL ZONE
- *CHA HAMLET COMMERCIAL ZONE
- ++CR RURAL COMMERCIAL ZONE
- *CM MARINE COMMERCIAL ZONE

INDUSTRIAL ZONES

- ++MG GENERAL INDUSTRIAL ZONE
- ++ML LIGHT INDUSTRIAL ZONE
- *MM MARINE INDUSTRIAL ZONE
- ++MR RURAL INDUSTRIAL ZONE
- *MD DISPOSAL INDUSTRIAL ZONE
- *MX EXTRACTIVE INDUSTRIAL ZONE
- *MS SPECIAL INDUSTRIAL ZONE

AGRICULTURAL ZONES

- A AGRICULTURAL ZONE

INSTITUTIONAL ZONES

- *IC COMMUNITY INSTITUTIONAL ZONE
- *IN NEIGHBOURHOOD INSTITUTIONAL ZONE
- *IR RURAL INSTITUTIONAL ZONE

OPEN SPACE ZONES

- *OS OPEN SPACE ZONE
- *OST OPEN SPACE-TENT & TRAILER ZONE

HAZARD LAND ZONES

- *HL HAZARD LAND ZONE

Legend

- BOUNDARY OF FIGURES
- SCHEDULE BOUNDARY
- ZONE BOUNDARY
- (370) BOUNDARY OF LANDS HAVING REFERENCE TO SECTION 37 OF THIS BY-LAW

*NOTE: According to Section 5.6 of this By-Law, all lands within the R3, R4, R5, R6, CG, CS, CN, CH, CHA, CR, CM, MG, ML, MM, MR, MD, MX, MS, IC, IN, IR, OS, OST, & HL zones are site plan control areas by By-law No. 751-HC/11

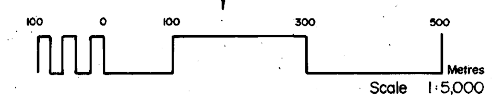
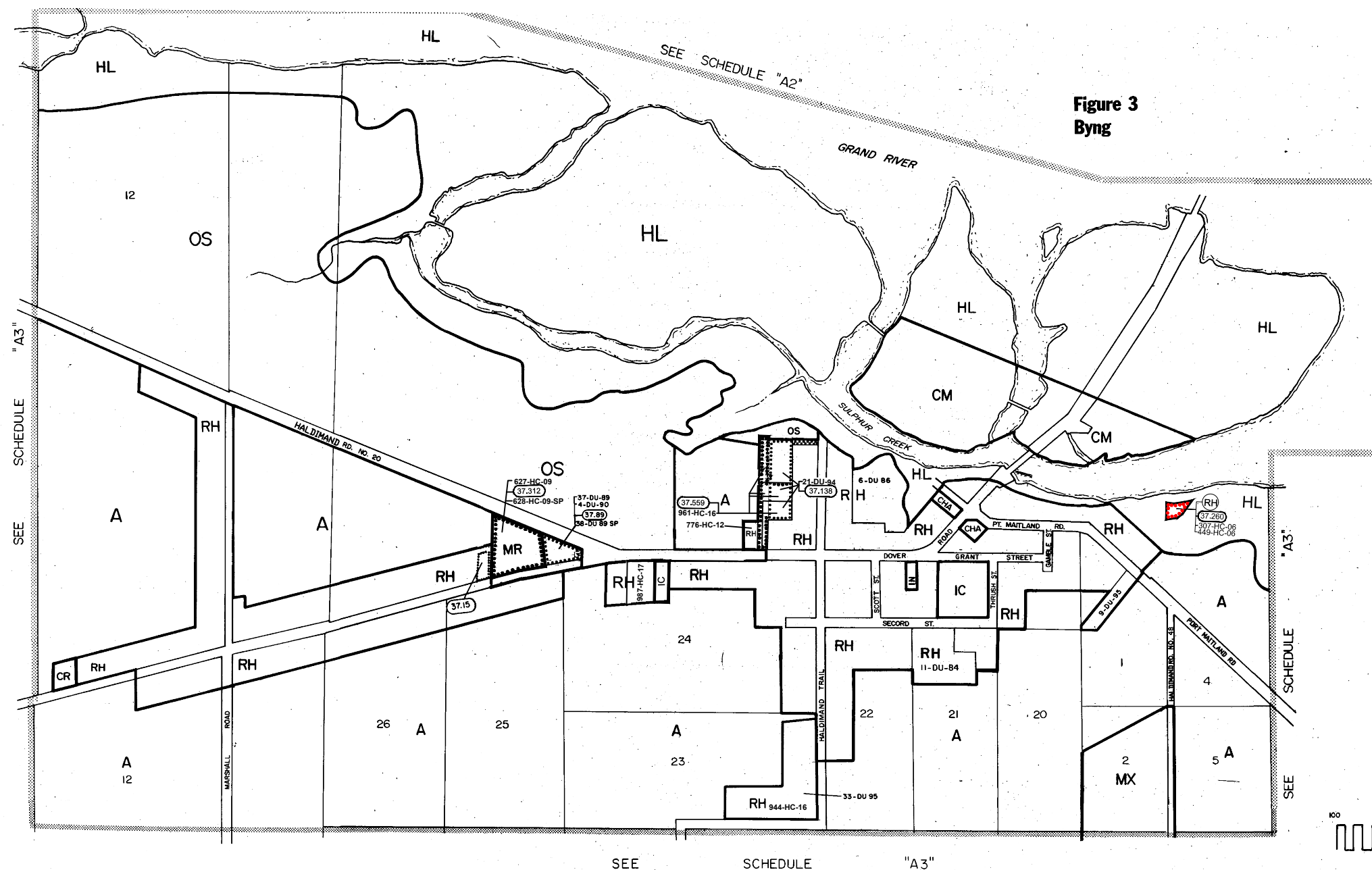
This is Schedule "A5" to By-law 1-DU 80 passed the 14th day of August 1980

Neil Richardson
Regional Chairman
Michael Johnston
Regional Clerk

OFFICE CONSOLIDATION
FEBRUARY 2019

++NOTE: All Lands within the CS, CH, CR, MG, ML and MR zones of Zoning By-Law 1-DU 80 are subject to By-Laws 1050-HC/18 & 1052-HC/18 which permits the use of a Scrap Material Collection Bin for a period of up to two (2) years expiring on Feb 12, 2020

Figure 3
Byng



Schedule "A6"FIGURE 1 to By-law 1-DU 80

REGIONAL MUNICIPALITY OF
HALDIMAND-NORFOLK
PART OF THE
Town of Dunnville
PARTS OF THE FORMER TOWNSHIP OF
Dunn

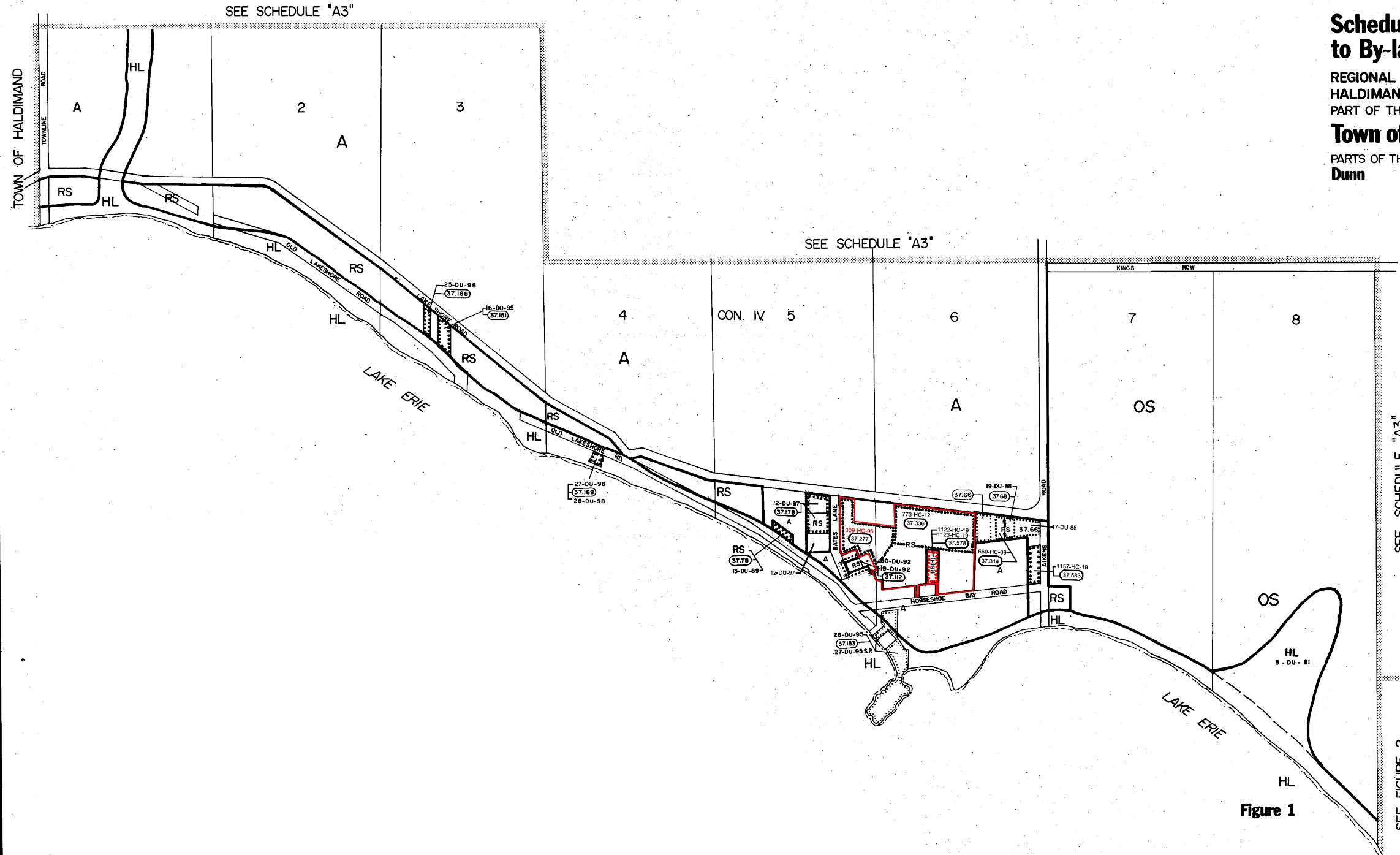


Figure 1

SEE SCHEDULE "A3"
SEE FIGURE 2

Zone Categories

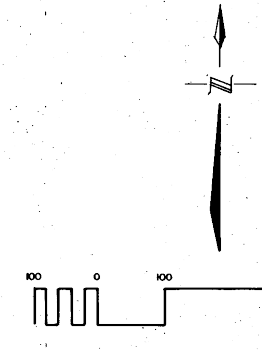
- RESIDENTIAL ZONES**
 - R1 URBAN RESIDENTIAL TYPE 1 ZONE
 - R2 URBAN RESIDENTIAL TYPE 2 ZONE
 - *R3 URBAN RESIDENTIAL TYPE 3 ZONE
 - *R4 URBAN RESIDENTIAL TYPE 4 ZONE
 - *R5 URBAN RESIDENTIAL TYPE 5 ZONE
 - *R6 URBAN RESIDENTIAL TYPE 6 ZONE
 - RH HAMLET RESIDENTIAL ZONE
 - RS SEASONAL RESIDENTIAL ZONE
- COMMERCIAL ZONES**
 - *CG GENERAL COMMERCIAL ZONE
 - ++CS SERVICE COMMERCIAL ZONE
 - *CN NEIGHBOURHOOD COMMERCIAL ZONE
 - ++CH HIGHWAY COMMERCIAL ZONE
 - *CHA HAMLET COMMERCIAL ZONE
 - ++CR RURAL COMMERCIAL ZONE
 - *CM MARINE COMMERCIAL ZONE
- INDUSTRIAL ZONES**
 - +++MG GENERAL INDUSTRIAL ZONE
 - ++ML LIGHT INDUSTRIAL ZONE
 - *MM MARINE INDUSTRIAL ZONE
 - ++MR RURAL INDUSTRIAL ZONE
 - *MD DISPOSAL INDUSTRIAL ZONE
 - *MX EXTRACTIVE INDUSTRIAL ZONE
 - *MS SPECIAL INDUSTRIAL ZONE
- AGRICULTURAL ZONES**
 - A AGRICULTURAL ZONE
- INSTITUTIONAL ZONES**
 - *IC COMMUNITY INSTITUTIONAL ZONE
 - *IN NEIGHBOURHOOD INSTITUTIONAL ZONE
 - *IR RURAL INSTITUTIONAL ZONE
- OPEN SPACE ZONES**
 - *OS OPEN SPACE ZONE
 - *OST OPEN SPACE-TENT & TRAILER ZONE
- HAZARD LAND ZONES**
 - *HL HAZARD LAND ZONE

Legend

- BOUNDARY OF FIGURES
- SCHEDULE BOUNDARY
- ZONE BOUNDARY
- (370) BOUNDARY OF LANDS HAVING REFERENCE TO SECTION 37 OF THIS BY-LAW

++NOTE: All Lands within the CS, CH, CR, MG, ML and MR zones of Zoning By-Law 1-DU 80 are subject to By-Laws 1050-HC/18 & 1052-HC/18 which permits the use of a Scrap Material Collection Bin for a period of up to two (2) years expiring on Feb 12, 2020

*NOTE: According to Section 5.6 of this By-Law, all lands within the R3, R4, R5, R6, CG, CS, CN, CH, CHA, CR, CM, MG, ML, MM, MR, MD, MX, MS, IC, IN, IR, OS, OST, & HL zones are site plan control areas by By-law No. 751-HC/11



This is Schedule "A6" to By-law 1-DU 80 passed the 14th day of August 1980

OFFICE CONSOLIDATION
FEB 2020

Richard Kalender
Regional Chairman
[Signature]
Regional Clerk

**Schedule "A6"FIGURE 2
to By-law 1-DU 80**

REGIONAL MUNICIPALITY OF
HALDIMAND-NORFOLK
PART OF THE
Town of Dunnville
PARTS OF THE FORMER TOWNSHIP OF
Dunn

Zone Categories

- RESIDENTIAL ZONES**
- R1 URBAN RESIDENTIAL TYPE 1 ZONE
 - R2 URBAN RESIDENTIAL TYPE 2 ZONE
 - *R3 URBAN RESIDENTIAL TYPE 3 ZONE
 - *R4 URBAN RESIDENTIAL TYPE 4 ZONE
 - *R5 URBAN RESIDENTIAL TYPE 5 ZONE
 - *R6 URBAN RESIDENTIAL TYPE 6 ZONE
 - RH HAMLET RESIDENTIAL ZONE
 - RS SEASONAL RESIDENTIAL ZONE

- COMMERCIAL ZONES**
- *CG GENERAL COMMERCIAL ZONE
 - ++*CS SERVICE COMMERCIAL ZONE
 - *CN NEIGHBOURHOOD COMMERCIAL ZONE
 - +++*CH HIGHWAY COMMERCIAL ZONE
 - *CHA HAMLET COMMERCIAL ZONE
 - +++*CR RURAL COMMERCIAL ZONE
 - *CM MARINE COMMERCIAL ZONE

- INDUSTRIAL ZONES**
- +++*MG GENERAL INDUSTRIAL ZONE
 - +++*ML LIGHT INDUSTRIAL ZONE
 - *MM MARINE INDUSTRIAL ZONE
 - +++*MR RURAL INDUSTRIAL ZONE
 - *MD DISPOSAL INDUSTRIAL ZONE
 - *MX EXTRACTIVE INDUSTRIAL ZONE
 - *MS SPECIAL INDUSTRIAL ZONE

- AGRICULTURAL ZONES**
- A AGRICULTURAL ZONE

- INSTITUTIONAL ZONES**
- *IC COMMUNITY INSTITUTIONAL ZONE
 - *IN NEIGHBOURHOOD INSTITUTIONAL ZONE
 - *IR RURAL INSTITUTIONAL ZONE

- OPEN SPACE ZONES**
- *OS OPEN SPACE ZONE
 - *OST OPEN SPACE-TENT & TRAILER ZONE

- HAZARD LAND ZONES**
- *HL HAZARD LAND ZONE

Legend

- BOUNDARY OF FIGURES
- SCHEDULE BOUNDARY
- ZONE BOUNDARY
- 370 BOUNDARY OF LANDS HAVING REFERENCE TO SECTION 37 OF THIS BY-LAW

++NOTE: All Lands within the CS, CH, CR, MG, ML and MR zones of Zoning By-Law 1-DU 80 are subject to By-Laws 1050-HC/18 & 1052-HC/18 which permits the use of a Scrap Material Collection Bin for a period of up to two (2) years expiring on Feb 12, 2020

*NOTE: According to Section 5.6 of this By-Law, all lands within the R3, R4, R5, R6, CG, CS, CN, CH, CHA, CR, CM, MG, ML, MM, MR, MD, MX, MS, IC, IN, IR, OS, OST, & HL zones are site plan control areas by By-law No. 751-HC/11

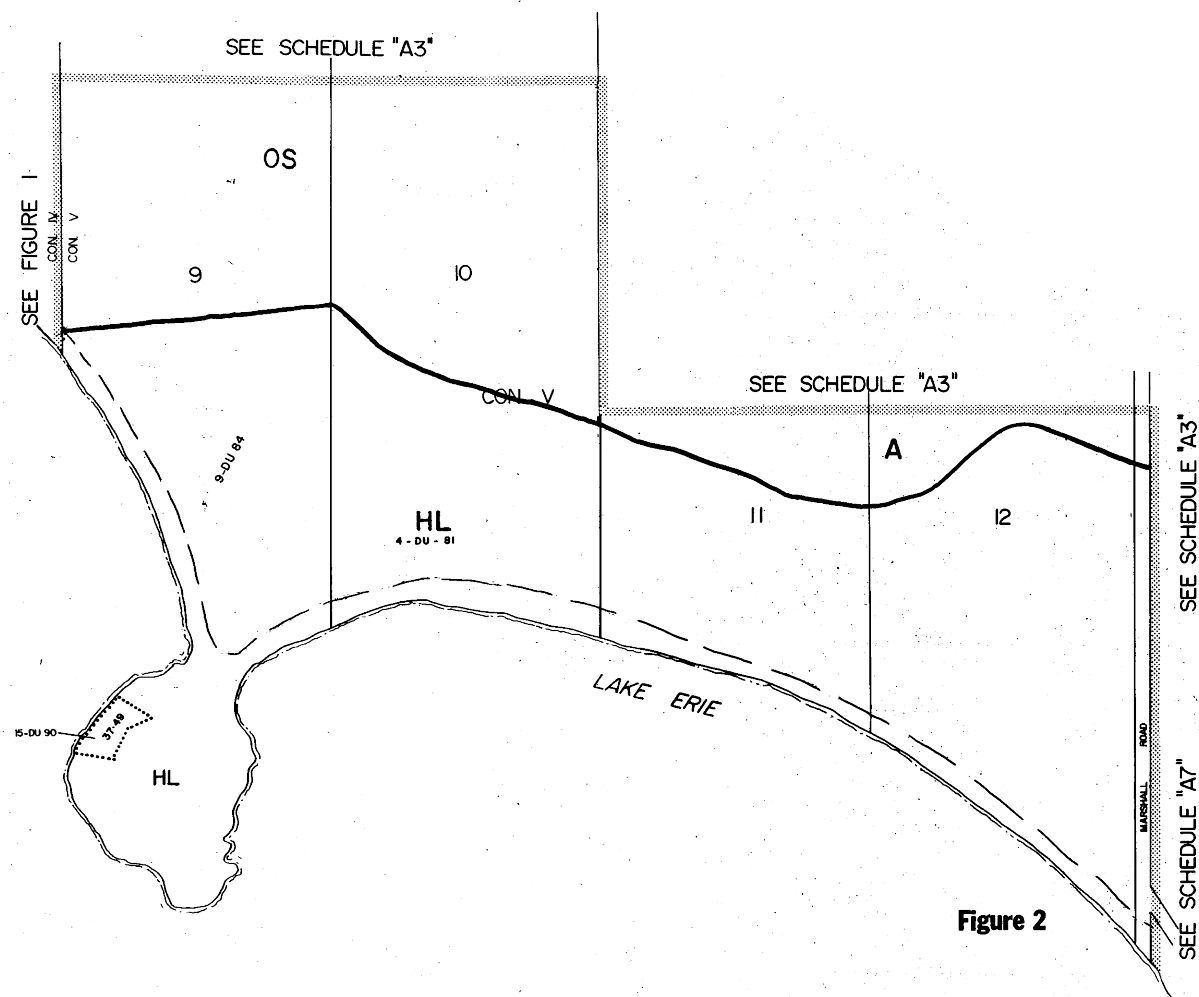
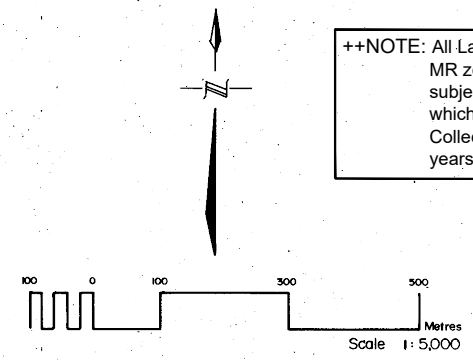
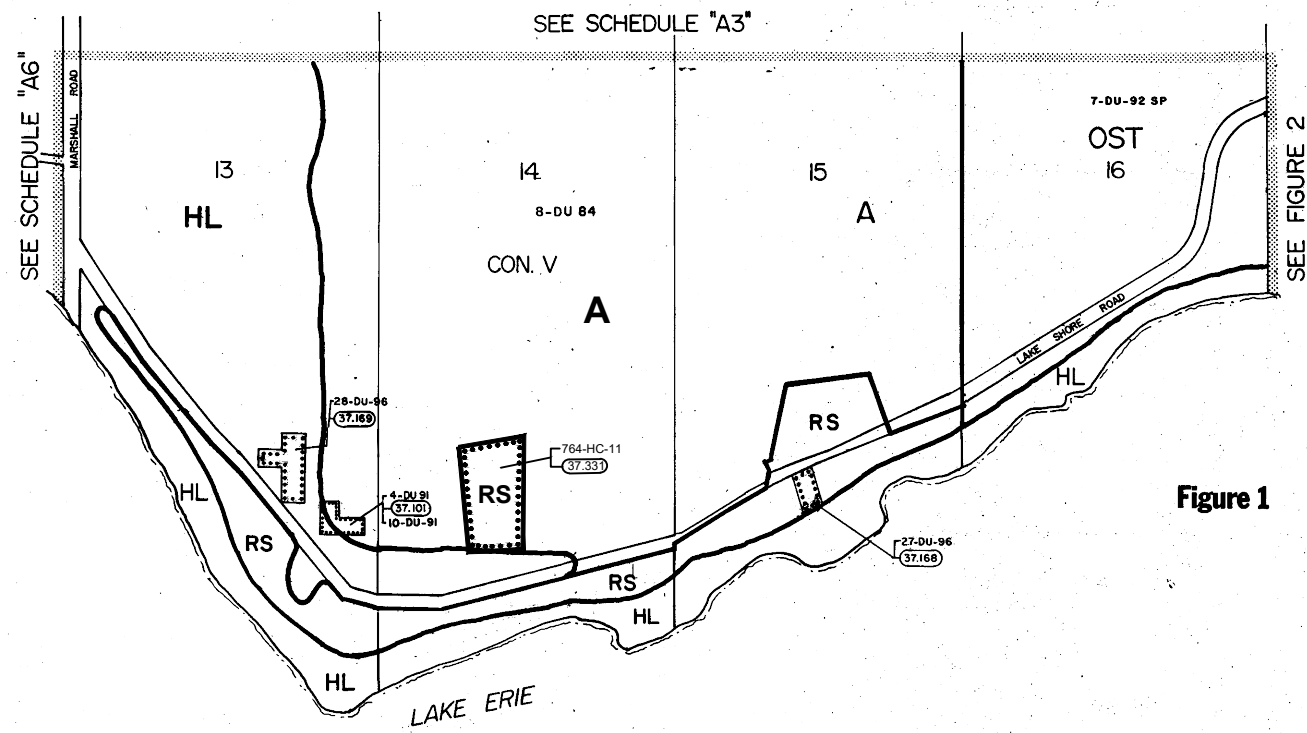


Figure 2



OFFICE CONSOLIDATION
AUGUST 2018

This is Schedule "A6" to By-law 1-DU 80 passed the 14th day of August 1980
[Signature]
Regional Chairman
[Signature]
Regional Clerk



Schedule "A7" ...FIGURE 1 to By-law 1-DU 80

REGIONAL MUNICIPALITY OF HALDIMAND-NORFOLK
PART OF THE
Town of Dunnville
PARTS OF THE FORMER TOWNSHIP OF Dunn

Zone Categories

RESIDENTIAL ZONES

- RI URBAN RESIDENTIAL TYPE 1 ZONE
- *R2 URBAN RESIDENTIAL TYPE 2 ZONE
- *R3 URBAN RESIDENTIAL TYPE 3 ZONE
- *R4 URBAN RESIDENTIAL TYPE 4 ZONE
- *R5 URBAN RESIDENTIAL TYPE 5 ZONE
- R6 URBAN RESIDENTIAL TYPE 6 ZONE
- RH HAMLET RESIDENTIAL ZONE
- RS SEASONAL RESIDENTIAL ZONE

COMMERCIAL ZONES

- *CG GENERAL COMMERCIAL ZONE
- ++*CS SERVICE COMMERCIAL ZONE
- *CN NEIGHBOURHOOD COMMERCIAL ZONE
- ++*CH HIGHWAY COMMERCIAL ZONE
- *CHA HAMLET COMMERCIAL ZONE
- ++*CR RURAL COMMERCIAL ZONE
- *CM MARINE COMMERCIAL ZONE

INDUSTRIAL ZONES

- ++*MG GENERAL INDUSTRIAL ZONE
- ++*ML LIGHT INDUSTRIAL ZONE
- *MM MARINE INDUSTRIAL ZONE
- ++*MR RURAL INDUSTRIAL ZONE
- *MD DISPOSAL INDUSTRIAL ZONE
- *MX EXTRACTIVE INDUSTRIAL ZONE
- *MS SPECIAL INDUSTRIAL ZONE

AGRICULTURAL ZONES

- A AGRICULTURAL ZONE

INSTITUTIONAL ZONES

- *IC COMMUNITY INSTITUTIONAL ZONE
- *IN NEIGHBOURHOOD INSTITUTIONAL ZONE
- *IR RURAL INSTITUTIONAL ZONE

OPEN SPACE ZONES

- *OS OPEN SPACE ZONE
- *OST OPEN SPACE-TENT & TRAILER ZONE

HAZARD LAND ZONES

- *HL HAZARD LAND ZONE

Legend

- BOUNDARY OF FIGURES
- SCHEDULE BOUNDARY
- ZONE BOUNDARY

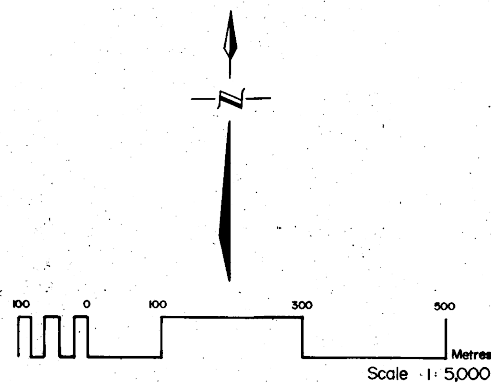
- (370) BOUNDARY OF LANDS HAVING REFERENCE TO SECTION 37 OF THIS BY-LAW

++NOTE: All Lands within the CS, CH, CR, MG, ML and MR zones of Zoning By-Law 1-DU 80 are subject to By-Laws 1050-HC/18 & 1052-HC/18 which permits the use of a Scrap Material Collection Bin for a period of up to two (2) years expiring on Feb 12, 2020

*NOTE: According to Section 5.6 of this By-Law, all lands within the R3, R4, R5, R6, CG, CS, CN, CH, CHA, CR, CM, MG, ML, MM, MR, MD, MX, MS, IC, IN, IR, OS, OST, & HL zones are site plan control areas by By-law No. 751-HC/11

This is Schedule "A7" to By-law 1-DU 80 passed the 14th day of August 1980

Neil Richardson
Regional Chairman
Paul Johnston
Regional Clerk



OFFICE CONSOLIDATION
FEB 2019

Schedule "A7"...FIGURE 2 to By-law 1-DU 80

REGIONAL MUNICIPALITY OF
HALDIMAND-NORFOLK
PART OF THE

Town of Dunnville

PARTS OF THE FORMER TOWNSHIP OF
Dunn

Zone Categories

RESIDENTIAL ZONES

- R1 URBAN RESIDENTIAL TYPE 1 ZONE
- R2 URBAN RESIDENTIAL TYPE 2 ZONE
- * R3 URBAN RESIDENTIAL TYPE 3 ZONE
- * R4 URBAN RESIDENTIAL TYPE 4 ZONE
- * R5 URBAN RESIDENTIAL TYPE 5 ZONE
- * R6 URBAN RESIDENTIAL TYPE 6 ZONE
- RH HAMLET RESIDENTIAL ZONE
- RS SEASONAL RESIDENTIAL ZONE

COMMERCIAL ZONES

- * CG GENERAL COMMERCIAL ZONE
- +++ CS SERVICE COMMERCIAL ZONE
- * CN NEIGHBOURHOOD COMMERCIAL ZONE
- +++ CH HIGHWAY COMMERCIAL ZONE
- * CHA HAMLET COMMERCIAL ZONE
- +++ CR RURAL COMMERCIAL ZONE
- * CM MARINE COMMERCIAL ZONE

INDUSTRIAL ZONES

- ++ * MG GENERAL INDUSTRIAL ZONE
- ++ * ML LIGHT INDUSTRIAL ZONE
- * MM MARINE INDUSTRIAL ZONE
- ++ * MR RURAL INDUSTRIAL ZONE
- * MD DISPOSAL INDUSTRIAL ZONE
- * MX EXTRACTIVE INDUSTRIAL ZONE
- * MS SPECIAL INDUSTRIAL ZONE

AGRICULTURAL ZONES

- A AGRICULTURAL ZONE

INSTITUTIONAL ZONES

- * IC COMMUNITY INSTITUTIONAL ZONE
- * IN NEIGHBOURHOOD INSTITUTIONAL ZONE
- * IR RURAL INSTITUTIONAL ZONE

OPEN SPACE ZONES

- * OS OPEN SPACE ZONE
- * OST OPEN SPACE-TENT & TRAILER ZONE

HAZARD LAND ZONES

- * HL HAZARD LAND ZONE

Legend

- BOUNDARY OF FIGURES
- SCHEDULE BOUNDARY
- ZONE BOUNDARY

- (370) BOUNDARY OF LANDS HAVING REFERENCE TO SECTION 37 OF THIS BY-LAW

++NOTE: All Lands within the CS, CH, CR, MG, ML and MR zones of Zoning By-Law 1-DU 80 are subject to By-Laws 1050-HC/18 & 1052-HC/18 which permits the use of a Scrap Material Collection Bin for a period of up to two (2) years expiring on Feb 12, 2020

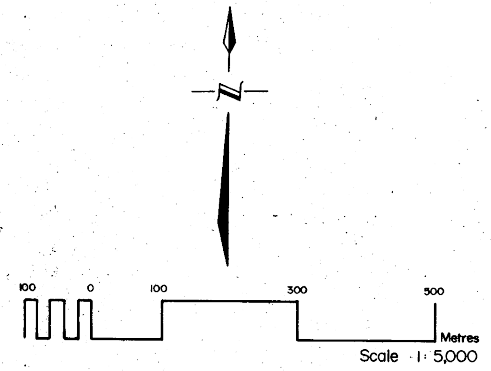
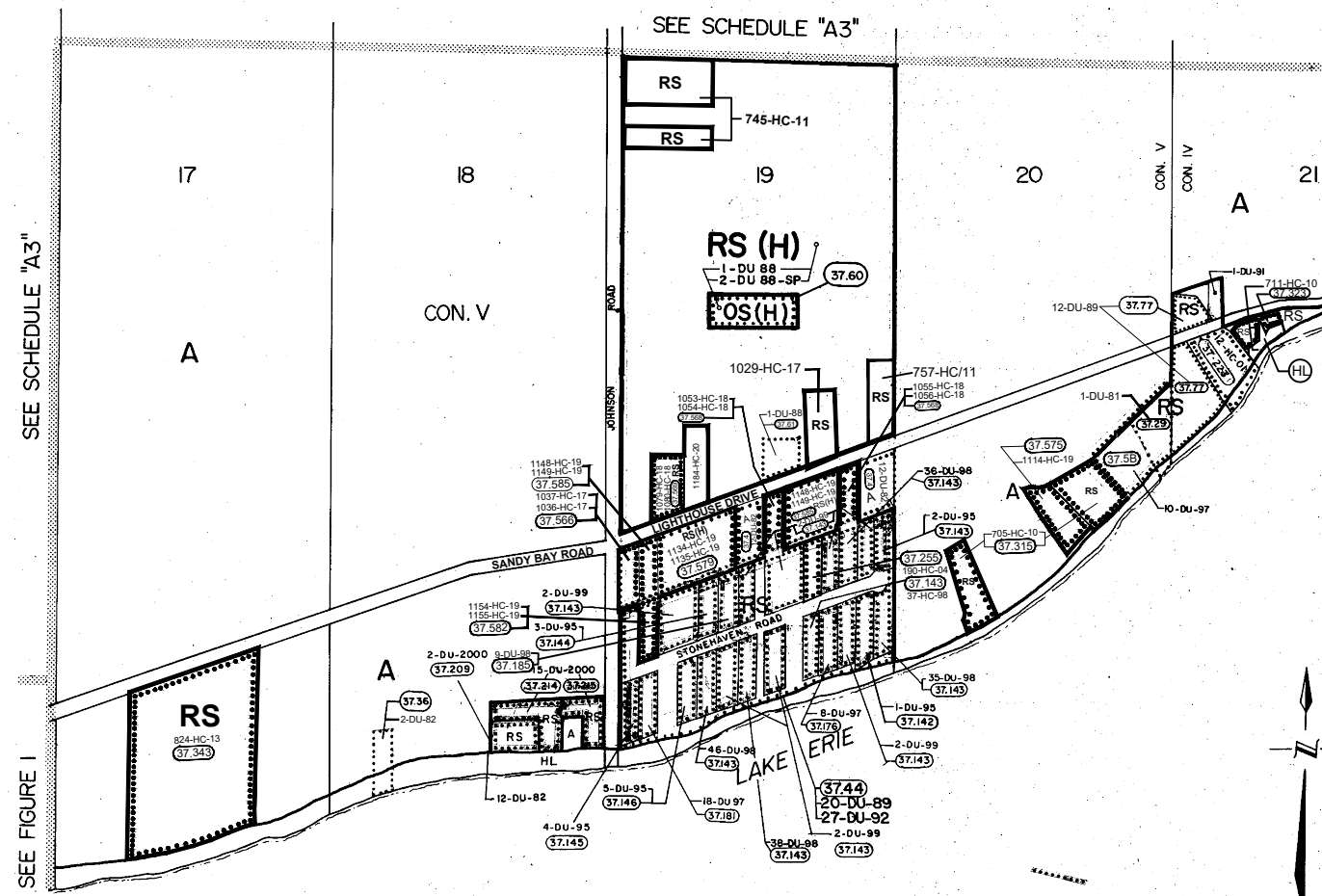
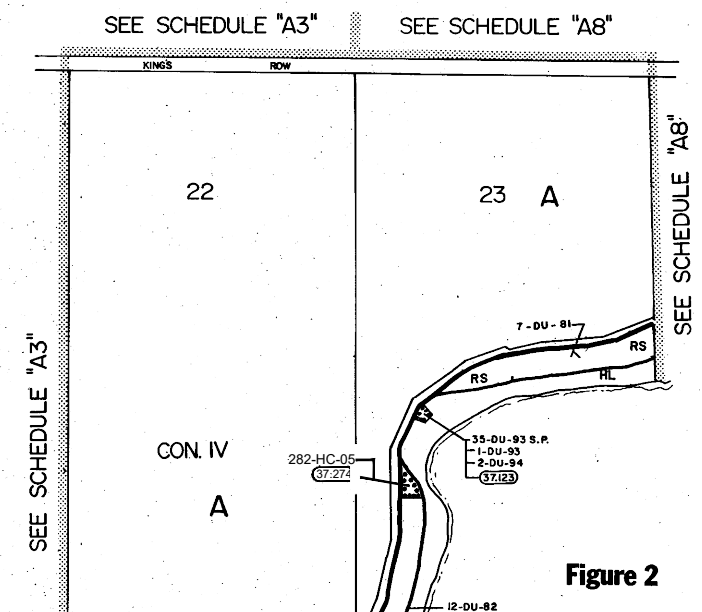
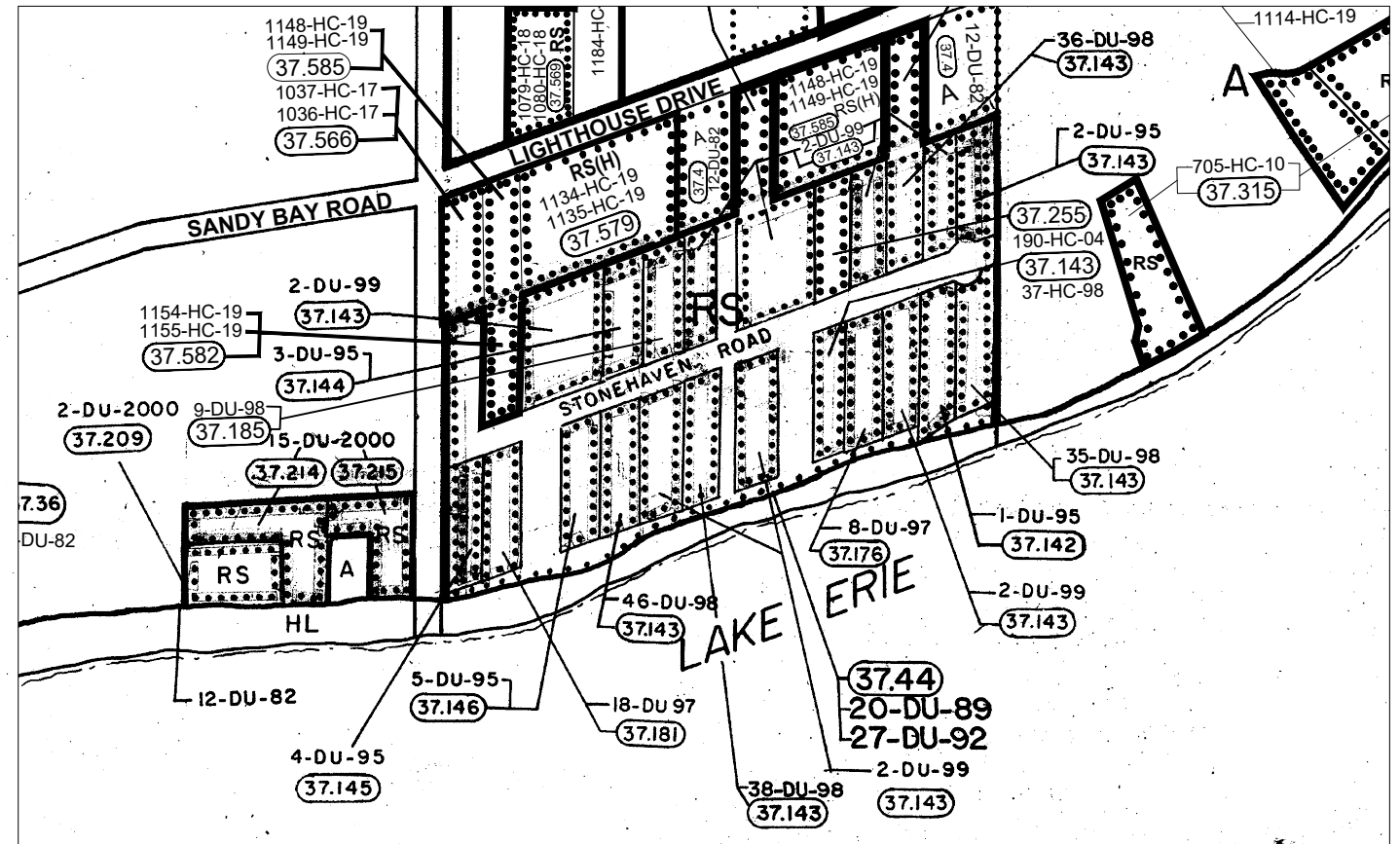
*NOTE: According to Section 5.6 of this By-Law, all lands within the R3, R4, R5, R6, CG, CS, CN, CH, CHA, CR, CM, MG, ML, MM, MR, MD, MX, MS, IC, IN, IR, OS, OST, & HL zones are site plan control areas by By-law No. 751-HC/11

This is Schedule "A7" to By-law 1-DU 80 passed the 14th day of August 1980

Neil Richardson
Regional Chairman
Paul Johnston
Regional Clerk

OFFICE CONSOLIDATION

AUG 2020



SEE SCHEDULE "A2"

Schedule "A8" to By-law 1-DU 80

REGIONAL MUNICIPALITY OF HALDIMAND-NORFOLK
PART OF THE
Town of Dunnville
PARTS OF THE FORMER TOWNSHIPS OF
Dunn & Sherbrooke

Zone Categories

- RESIDENTIAL ZONES**
 - RI URBAN RESIDENTIAL TYPE 1 ZONE
 - R2 URBAN RESIDENTIAL TYPE 2 ZONE
 - *R3 URBAN RESIDENTIAL TYPE 3 ZONE
 - *R4 URBAN RESIDENTIAL TYPE 4 ZONE
 - *R5 URBAN RESIDENTIAL TYPE 5 ZONE
 - *R6 URBAN RESIDENTIAL TYPE 6 ZONE
 - RH HAMLET RESIDENTIAL ZONE
 - RS SEASONAL RESIDENTIAL ZONE
- COMMERCIAL ZONES**
 - *CG GENERAL COMMERCIAL ZONE
 - +++CS SERVICE COMMERCIAL ZONE
 - *CN NEIGHBOURHOOD COMMERCIAL ZONE
 - +++CH HIGHWAY COMMERCIAL ZONE
 - *CHA HAMLET COMMERCIAL ZONE
 - +++CR RURAL COMMERCIAL ZONE
 - *CM MARINE COMMERCIAL ZONE
- INDUSTRIAL ZONES**
 - +++MG GENERAL INDUSTRIAL ZONE
 - +++ML LIGHT INDUSTRIAL ZONE
 - *MM MARINE INDUSTRIAL ZONE
 - +++MR RURAL INDUSTRIAL ZONE
 - *MD DISPOSAL INDUSTRIAL ZONE
 - *MX EXTRACTIVE INDUSTRIAL ZONE
 - *MS SPECIAL INDUSTRIAL ZONE
- AGRICULTURAL ZONES**
 - A AGRICULTURAL ZONE
- INSTITUTIONAL ZONES**
 - *IC COMMUNITY INSTITUTIONAL ZONE
 - *IN NEIGHBOURHOOD INSTITUTIONAL ZONE
 - *IR RURAL INSTITUTIONAL ZONE
- OPEN SPACE ZONES**
 - *OS OPEN SPACE ZONE
 - *OST OPEN SPACE-TENT & TRAILER ZONE
- HAZARD LAND ZONES**
 - *HL HAZARD LAND ZONE

Legend

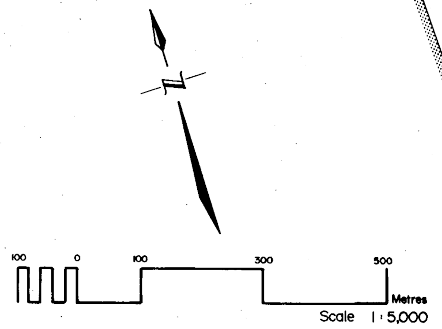
- BOUNDARY OF FIGURES
- SCHEDULE BOUNDARY
- ZONE BOUNDARY
- (370) BOUNDARY OF LANDS HAVING REFERENCE TO SECTION 37 OF THIS BY-LAW

*NOTE: According to Section 5.6 of this By-Law, all lands within the R3, R4, R5, R6, CG, CS, CN, CH, CHA, CR, CM, MG, ML, MM, MR, MD, MX, MS, IC, IN, IR, OS, OST, & HL zones are site plan control areas by By-law No. 751-HC/11

+++NOTE: All Lands within the CS, CH, CR, MG, ML and MR zones of Zoning By-Law 1-DU 80 are subject to By-Laws 1050-HC/18 & 1052-HC/18 which permits the use of a Scrap Material Collection Bin for a period of up to two (2) years expiring on Feb 12, 2020



This is Schedule "A8" to By-law 1-DU 80 passed the 14th day of August 1980
Scott McLaughlin
Regional Chairman
John McLaughlin
Regional Clerk



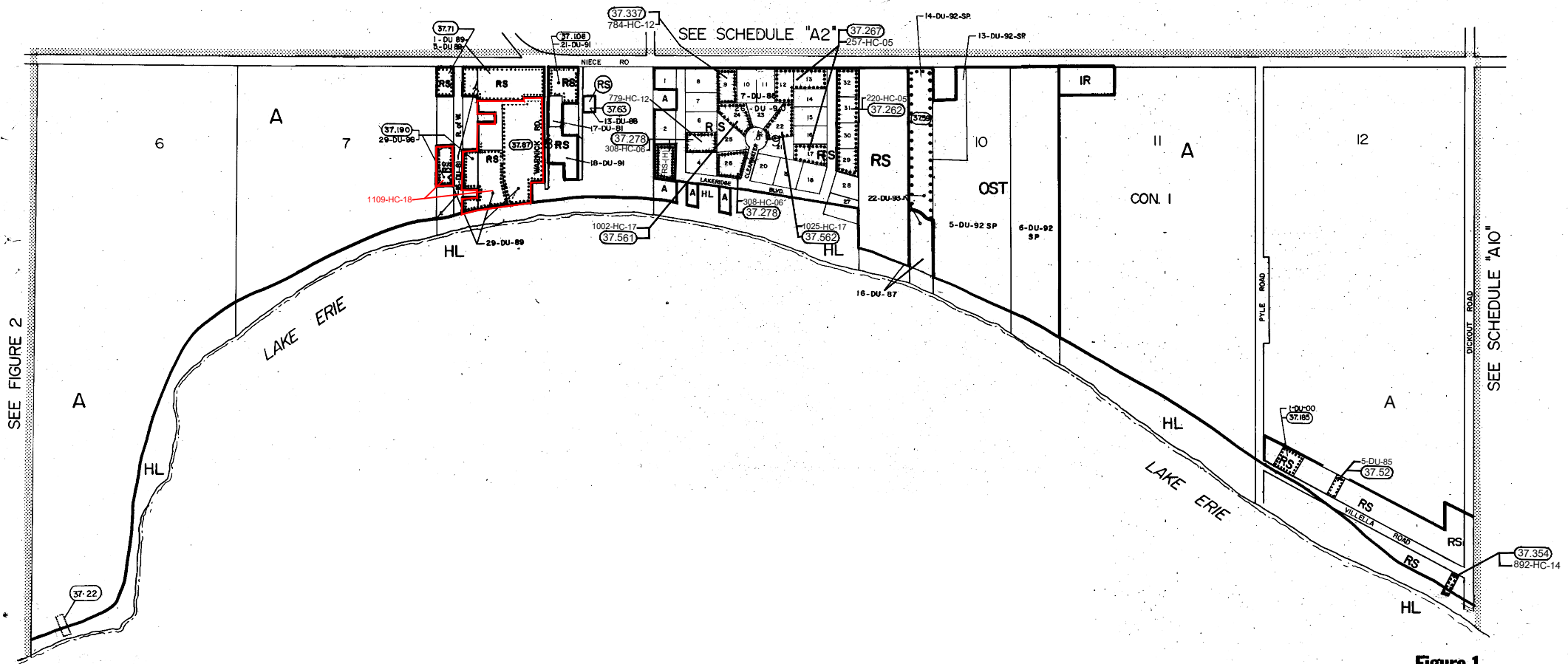


Figure 1

Schedule "A9" to By-law 1-DU 80....FIGURE 1

REGIONAL MUNICIPALITY OF HALDIMAND-NORFOLK
PART OF THE
Town of Dunnville
PARTS OF THE FORMER TOWNSHIP OF Sherbrooke

Zone Categories

RESIDENTIAL ZONES

- R1 URBAN RESIDENTIAL TYPE 1 ZONE
- R2 URBAN RESIDENTIAL TYPE 2 ZONE
- *R3 URBAN RESIDENTIAL TYPE 3 ZONE
- *R4 URBAN RESIDENTIAL TYPE 4 ZONE
- *R5 URBAN RESIDENTIAL TYPE 5 ZONE
- *R6 URBAN RESIDENTIAL TYPE 6 ZONE
- RH HAMLET RESIDENTIAL ZONE
- RS SEASONAL RESIDENTIAL ZONE

COMMERCIAL ZONES

- *CG GENERAL COMMERCIAL ZONE
- ++*CS SERVICE COMMERCIAL ZONE
- *CN NEIGHBOURHOOD COMMERCIAL ZONE
- ++*CH HIGHWAY COMMERCIAL ZONE
- *CHA HAMLET COMMERCIAL ZONE
- ++*CR RURAL COMMERCIAL ZONE
- *CM MARINE COMMERCIAL ZONE

INDUSTRIAL ZONES

- ++*MG GENERAL INDUSTRIAL ZONE
- ++*ML LIGHT INDUSTRIAL ZONE
- *MM MARINE INDUSTRIAL ZONE
- ++*MR RURAL INDUSTRIAL ZONE
- *MD DISPOSAL INDUSTRIAL ZONE
- *MX EXTRACTIVE INDUSTRIAL ZONE
- *MS SPECIAL INDUSTRIAL ZONE

AGRICULTURAL ZONES

- A AGRICULTURAL ZONE

INSTITUTIONAL ZONES

- *IC COMMUNITY INSTITUTIONAL ZONE
- *IN NEIGHBOURHOOD INSTITUTIONAL ZONE
- *IR RURAL INSTITUTIONAL ZONE

OPEN SPACE ZONES

- *OS OPEN SPACE ZONE
- *OST OPEN SPACE-TENT & TRAILER ZONE

HAZARD LAND ZONES

- *HL HAZARD LAND ZONE

Legend

- BOUNDARY OF FIGURES
- SCHEDULE BOUNDARY
- ZONE BOUNDARY
- (37) BOUNDARY OF LANDS HAVING REFERENCE TO SECTION 37 OF THIS BY-LAW

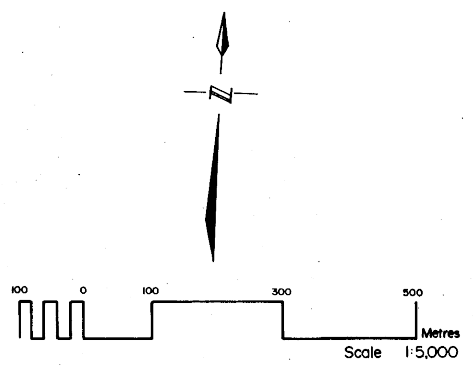
++NOTE: All Lands within the CS, CH, CR, MG, ML and MR zones of Zoning By-Law 1-DU 80 are subject to By-Laws 1050-HC/18 & 1052-HC/18 which permits the use of a Scrap Material Collection Bin for a period of up to two (2) years expiring on Feb 12, 2020

*NOTE: According to Section 5.6 of this By-Law, all lands within the R3, R4, R5, R6, CG, CS, CN, CH, CHA, CR, CM, MG, ML, MM, MR, MD, MX, MS, IC, IN, IR, OS, OST, & HL zones are site plan control areas by By-law No. 751-HC/11

This is Schedule "A9" to By-law 1-DU 80 passed the 14 th day of August 1980

John W. ...
Regional Chairman
...
Regional Clerk

OFFICE CONSOLIDATION
FEB 2019



**Schedule "A9"FIGURE 2
to By-law 1-DU 80**

REGIONAL MUNICIPALITY OF
HALDIMAND-NORFOLK
PART OF THE

Town of Dunnville

PARTS OF THE FORMER TOWNSHIP OF
Sherbrooke

Zone Categories

RESIDENTIAL ZONES

- R1 URBAN RESIDENTIAL TYPE 1 ZONE
- R2 URBAN RESIDENTIAL TYPE 2 ZONE
- *R3 URBAN RESIDENTIAL TYPE 3 ZONE
- *R4 URBAN RESIDENTIAL TYPE 4 ZONE
- *R5 URBAN RESIDENTIAL TYPE 5 ZONE
- *R6 URBAN RESIDENTIAL TYPE 6 ZONE
- RH HAMLET RESIDENTIAL ZONE
- RS SEASONAL RESIDENTIAL ZONE

COMMERCIAL ZONES

- *CG GENERAL COMMERCIAL ZONE
- +++CS SERVICE COMMERCIAL ZONE
- *CN NEIGHBOURHOOD COMMERCIAL ZONE
- +++CH HIGHWAY COMMERCIAL ZONE
- *CHA HAMLET COMMERCIAL ZONE
- +++CR RURAL COMMERCIAL ZONE
- *CM MARINE COMMERCIAL ZONE

INDUSTRIAL ZONES

- +++MG GENERAL INDUSTRIAL ZONE
- +++ML LIGHT INDUSTRIAL ZONE
- *MM MARINE INDUSTRIAL ZONE
- +++MR RURAL INDUSTRIAL ZONE
- *MD DISPOSAL INDUSTRIAL ZONE
- *MX EXTRACTIVE INDUSTRIAL ZONE
- *MS SPECIAL INDUSTRIAL ZONE

AGRICULTURAL ZONES

- A AGRICULTURAL ZONE

INSTITUTIONAL ZONES

- *IC COMMUNITY INSTITUTIONAL ZONE
- *IN NEIGHBOURHOOD INSTITUTIONAL ZONE
- *IR RURAL INSTITUTIONAL ZONE

OPEN SPACE ZONES

- *OS OPEN SPACE ZONE
- *OST OPEN SPACE-TENT & TRAILER ZONE

HAZARD LAND ZONES

- *HL HAZARD LAND ZONE

Legend

- BOUNDARY OF FIGURES
- SCHEDULE BOUNDARY
- ZONE BOUNDARY

- BOUNDARY OF LANDS HAVING REFERENCE TO SECTION 37 OF THIS BY-LAW

++NOTE: All Lands within the CS, CH, CR, MG, ML and MR zones of Zoning By-Law 1-DU 80 are subject to By-Laws 1050-HC/18 & 1052-HC/18 which permits the use of a Scrap Material Collection Bin for a period of up to two (2) years expiring on Feb 12, 2020

*NOTE: According to Section 5.6 of this By-Law, all lands within the R3, R4, R5, R6, CG, CS, CN, CH, CHA, CR, CM, MG, ML, MM, MR, MD, MX, MS, IC, IN, IR, OS, OST, & HL zones are site plan control areas by By-law No. 751-HC/11

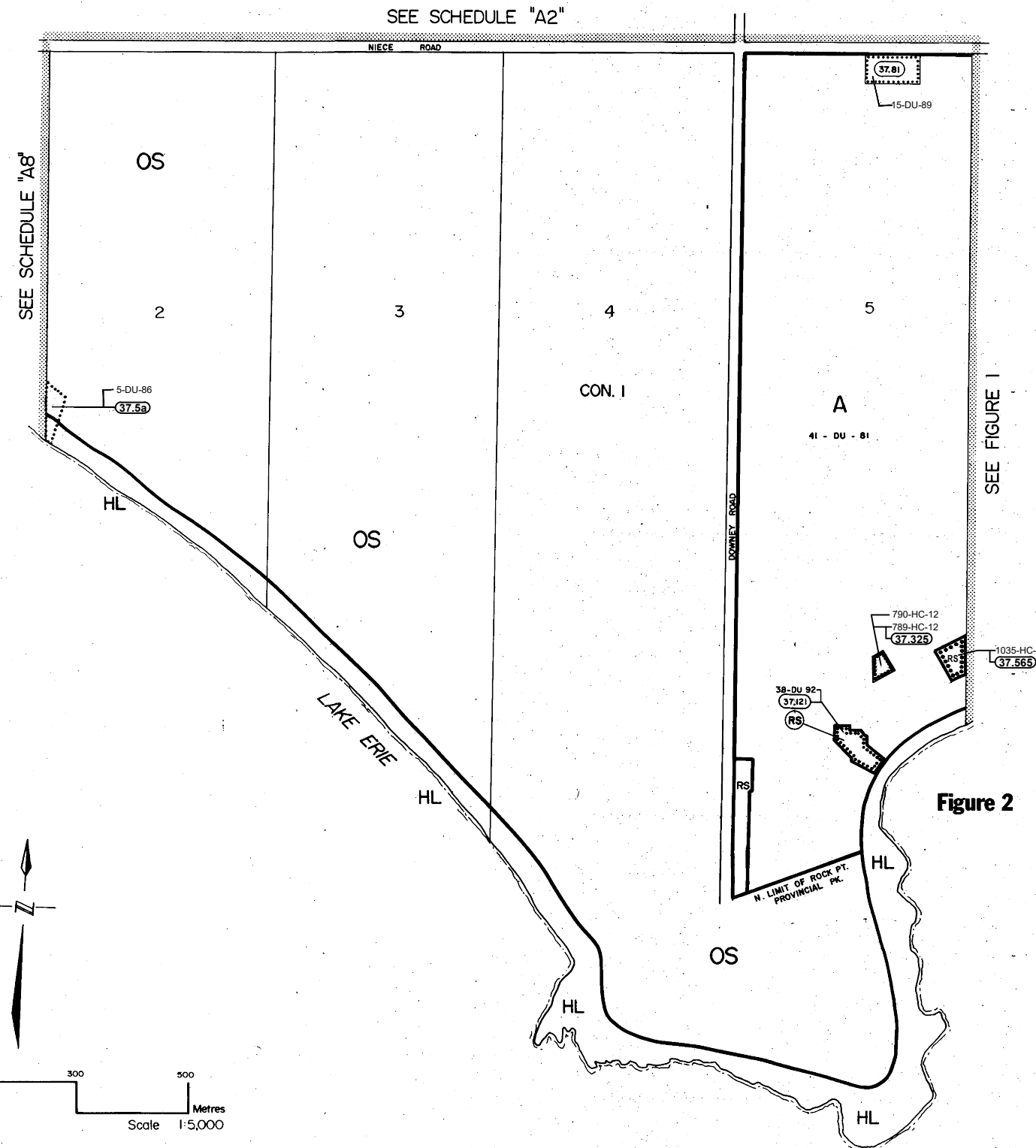


Figure 2

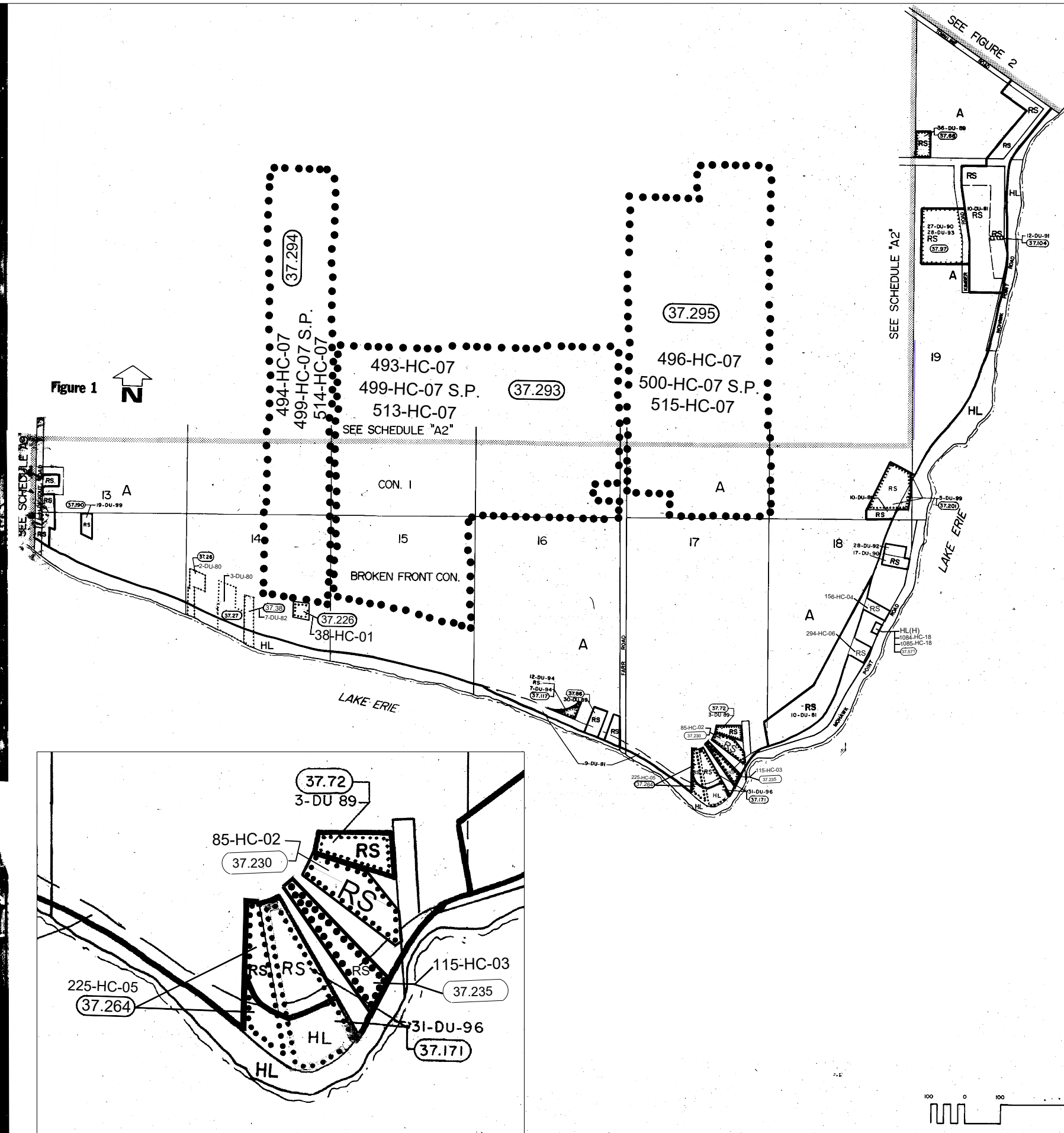
This is Schedule "A9" to By-law 1-DU 80 passed the 14 th day of August 1980

Richard Richardson
Regional Chairman
Richard Richardson
Regional Clerk

OFFICE CONSOLIDATION
FEB 2019

Schedule "A10"FIGURE 1 to By-law 1-DU 80

REGIONAL MUNICIPALITY OF
HALDIMAND-NORFOLK
PART OF THE
Town of Dunnville
PARTS OF THE FORMER TOWNSHIPS OF
Sherbrooke & Moulton



Zone Categories

- RESIDENTIAL ZONES**
- R1 URBAN RESIDENTIAL TYPE 1 ZONE
 - R2 URBAN RESIDENTIAL TYPE 2 ZONE
 - *R3 URBAN RESIDENTIAL TYPE 3 ZONE
 - *R4 URBAN RESIDENTIAL TYPE 4 ZONE
 - *R5 URBAN RESIDENTIAL TYPE 5 ZONE
 - *R6 URBAN RESIDENTIAL TYPE 6 ZONE
 - RH HAMLET RESIDENTIAL ZONE
 - RS SEASONAL RESIDENTIAL ZONE
- COMMERCIAL ZONES**
- *CG GENERAL COMMERCIAL ZONE
 - ++*CS SERVICE COMMERCIAL ZONE
 - *CN NEIGHBOURHOOD COMMERCIAL ZONE
 - ++*CH HIGHWAY COMMERCIAL ZONE
 - *CHA HAMLET COMMERCIAL ZONE
 - ++*CR RURAL COMMERCIAL ZONE
 - *CM MARINE COMMERCIAL ZONE
- INDUSTRIAL ZONES**
- ++*MG GENERAL INDUSTRIAL ZONE
 - ++*ML LIGHT INDUSTRIAL ZONE
 - *MM MARINE INDUSTRIAL ZONE
 - ++*MR RURAL INDUSTRIAL ZONE
 - *MD DISPOSAL INDUSTRIAL ZONE
 - *MX EXTRACTIVE INDUSTRIAL ZONE
 - *MS SPECIAL INDUSTRIAL ZONE

- AGRICULTURAL ZONES**
- A AGRICULTURAL ZONE
- INSTITUTIONAL ZONES**
- *IC COMMUNITY INSTITUTIONAL ZONE
 - *IN NEIGHBOURHOOD INSTITUTIONAL ZONE
 - *IR RURAL INSTITUTIONAL ZONE
- OPEN SPACE ZONES**
- *OS OPEN SPACE ZONE
 - *OST OPEN SPACE-TENT & TRAILER ZONE
- HAZARD LAND ZONES**
- *HL HAZARD LAND ZONE

Legend

- BOUNDARY OF FIGURES
- SCHEDULE BOUNDARY
- ZONE BOUNDARY
- (37.0) BOUNDARY OF LANDS HAVING REFERENCE TO SECTION 37 OF THIS BY-LAW

*NOTE: According to Section 5.6 of this By-Law, all lands within the R3, R4, R5, R6, CG, CS, CN, CH, CHA, CR, CM, MG, ML, MM, MR, MD, MX, MS, IC, IN, IR, OS, OST, & HL zones are site plan control areas by By-law No. 751-HC/11

++NOTE: All Lands within the CS, CH, CR, MG, ML and MR zones of Zoning By-Law 1-DU 80 are subject to By-Laws 1050-HC/18 & 1052-HC/18 which permits the use of a Scrap Material Collection Bin for a period of up to two (2) years expiring on Feb 12, 2020

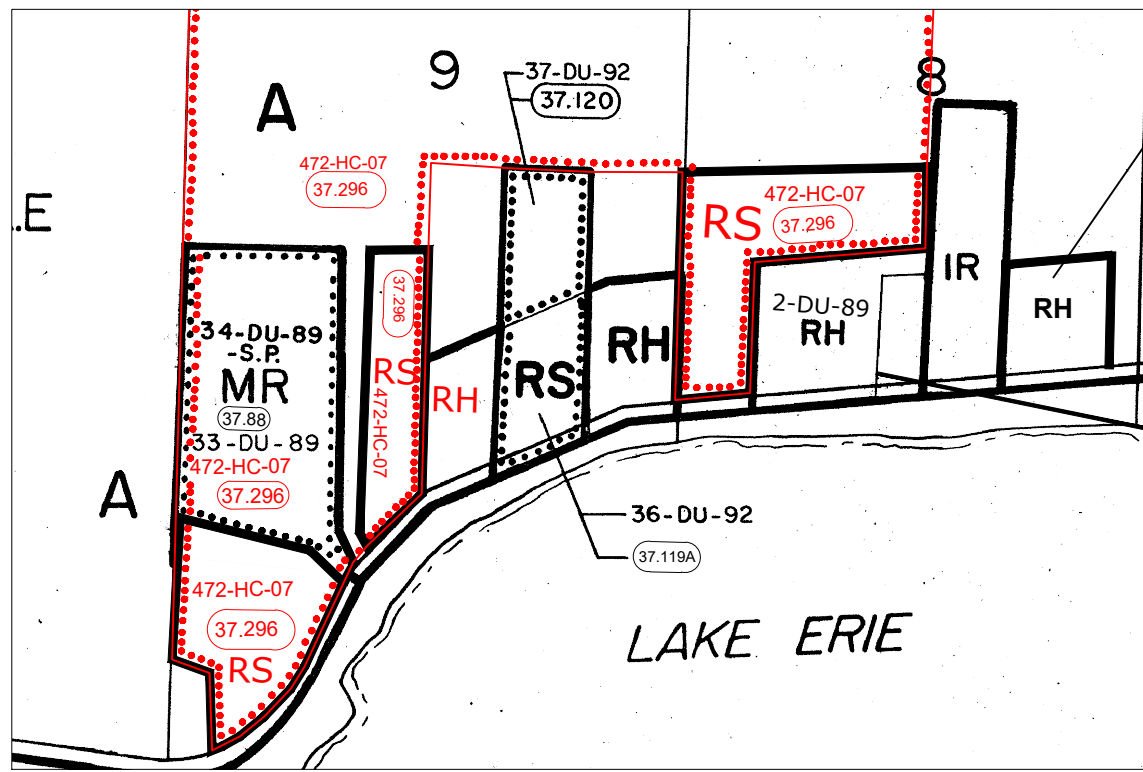
This is Schedule "A10" to By-law 1-DU 80 passed the 14 th day of August 1980

[Signature]
Regional Chairman
[Signature]
Regional Clerk

OFFICE CONSOLIDATION
FEBRUARY 2019

Schedule "A10" ...FIGURE 2 to By-law 1-DU 80

REGIONAL MUNICIPALITY OF
HALDIMAND-NORFOLK
PART OF THE
Town of Dunnville
PARTS OF THE FORMER TOWNSHIPS OF
Sherbrooke & Moulton



Zone Categories

RESIDENTIAL ZONES

- R1 URBAN RESIDENTIAL TYPE 1 ZONE
- R2 URBAN RESIDENTIAL TYPE 2 ZONE
- *R3 URBAN RESIDENTIAL TYPE 3 ZONE
- *R4 URBAN RESIDENTIAL TYPE 4 ZONE
- *R5 URBAN RESIDENTIAL TYPE 5 ZONE
- *R6 URBAN RESIDENTIAL TYPE 6 ZONE
- RH HAMLET RESIDENTIAL ZONE
- RS SEASONAL RESIDENTIAL ZONE

COMMERCIAL ZONES

- *CG GENERAL COMMERCIAL ZONE
- ++*CS SERVICE COMMERCIAL ZONE
- *CN NEIGHBOURHOOD COMMERCIAL ZONE
- ++*CH HIGHWAY COMMERCIAL ZONE
- *CHA HAMLET COMMERCIAL ZONE
- ++*CR RURAL COMMERCIAL ZONE
- *CM MARINE COMMERCIAL ZONE

INDUSTRIAL ZONES

- ++*MG GENERAL INDUSTRIAL ZONE
- ++*ML LIGHT INDUSTRIAL ZONE
- *MM MARINE INDUSTRIAL ZONE
- ++*MR RURAL INDUSTRIAL ZONE
- *MD DISPOSAL INDUSTRIAL ZONE
- *MX EXTRACTIVE INDUSTRIAL ZONE
- *MS SPECIAL INDUSTRIAL ZONE

AGRICULTURAL ZONES

- A AGRICULTURAL ZONE

INSTITUTIONAL ZONES

- *IC COMMUNITY INSTITUTIONAL ZONE
- *IN NEIGHBOURHOOD INSTITUTIONAL ZONE
- *IR RURAL INSTITUTIONAL ZONE

OPEN SPACE ZONES

- *OS OPEN SPACE ZONE
- *OST OPEN SPACE-TENT & TRAILER ZONE

HAZARD LAND ZONES

- *HL HAZARD LAND ZONE

Legend

- BOUNDARY OF FIGURES
- SCHEDULE BOUNDARY
- ZONE BOUNDARY
- (370) BOUNDARY OF LANDS HAVING REFERENCE TO SECTION 37 OF THIS BY-LAW

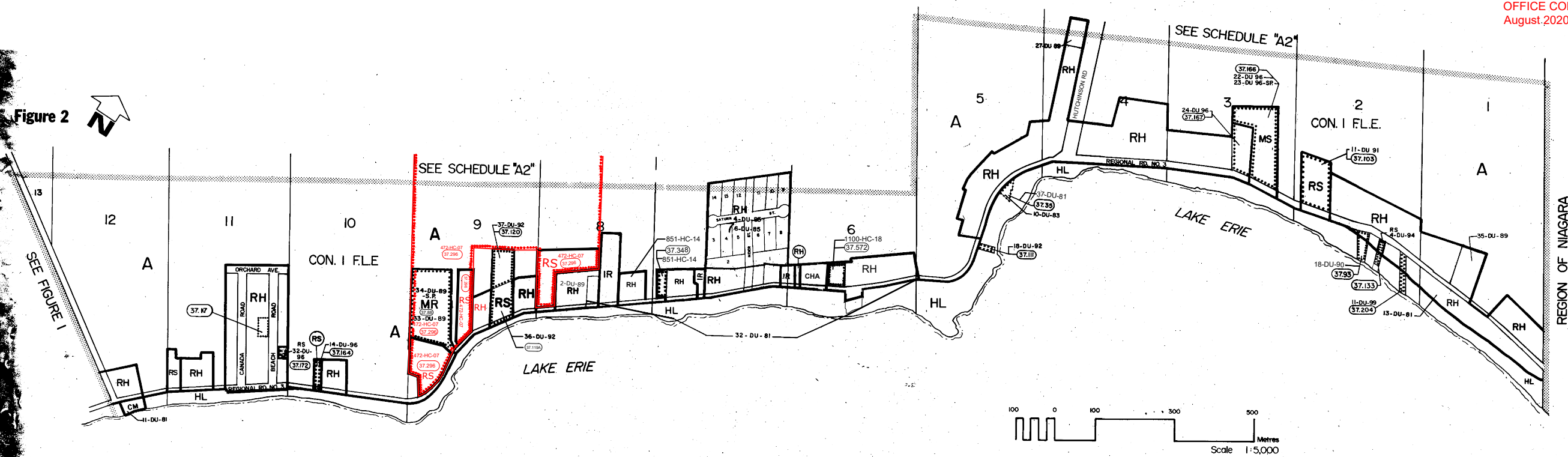
++NOTE: All Lands within the CS, CH, CR, MG, ML and MR zones of Zoning By-Law 1-DU 80 are subject to By-Laws 1050-HC/18 & 1052-HC/18 which permits the use of a Scrap Material Collection Bin for a period of up to two (2) years expiring on Feb 12, 2020

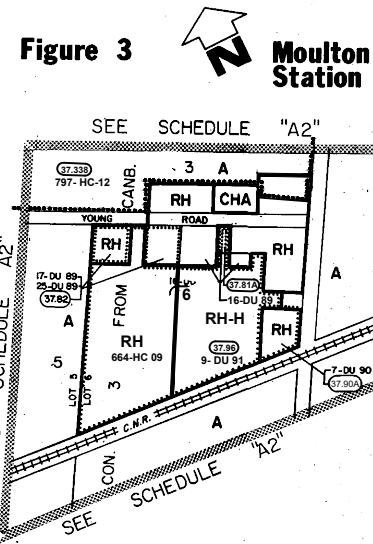
*NOTE: According to Section 5.6 of this By-Law, all lands within the R3, R4, R5, R6, CG, CS, CN, CH, CHA, CR, CM, MG, ML, MM, MR, MD, MX, MS, IC, IN, IR, OS, OST, & HL zones are site plan control areas by By-law No. 751-HC/11

This is Schedule "A10" to By-law, 1-DU 80 passed the 14 th day of August 1980
[Signature]
Regional Chairman
[Signature]
Regional Clerk

OFFICE CONSOLIDATION
August 2020

Figure 2





**Schedule "A10"FIGURE 3
to By-law 1-DU 80**

REGIONAL MUNICIPALITY OF
HALDIMAND-NORFOLK
PART OF THE
Town of Dunnville
PARTS OF THE FORMER TOWNSHIPS OF
Sherbrooke & Moulton

Zone Categories

RESIDENTIAL ZONES

- RI URBAN RESIDENTIAL TYPE 1 ZONE
- R2 URBAN RESIDENTIAL TYPE 2 ZONE
- *R3 URBAN RESIDENTIAL TYPE 3 ZONE
- *R4 URBAN RESIDENTIAL TYPE 4 ZONE
- *R5 URBAN RESIDENTIAL TYPE 5 ZONE
- *R6 URBAN RESIDENTIAL TYPE 6 ZONE
- RH HAMLET RESIDENTIAL ZONE
- RS SEASONAL RESIDENTIAL ZONE

COMMERCIAL ZONES

- *CG GENERAL COMMERCIAL ZONE
- +++CS SERVICE COMMERCIAL ZONE
- *CN NEIGHBOURHOOD COMMERCIAL ZONE
- +++CH HIGHWAY COMMERCIAL ZONE
- *CHA HAMLET COMMERCIAL ZONE
- +++CR RURAL COMMERCIAL ZONE
- *CM MARINE COMMERCIAL ZONE

INDUSTRIAL ZONES

- +++MG GENERAL INDUSTRIAL ZONE
- +++ML LIGHT INDUSTRIAL ZONE
- *MM MARINE INDUSTRIAL ZONE
- +++MR RURAL INDUSTRIAL ZONE
- *MD DISPOSAL INDUSTRIAL ZONE
- *MX EXTRACTIVE INDUSTRIAL ZONE
- *MS SPECIAL INDUSTRIAL ZONE

AGRICULTURAL ZONES

- A AGRICULTURAL ZONE

INSTITUTIONAL ZONES

- *IC COMMUNITY INSTITUTIONAL ZONE
- *IN NEIGHBOURHOOD INSTITUTIONAL ZONE
- *IR RURAL INSTITUTIONAL ZONE


OPEN SPACE ZONES

- *OS OPEN SPACE ZONE
- *OST OPEN SPACE-TENT & TRAILER ZONE

HAZARD LAND ZONES

- *HL HAZARD LAND ZONE


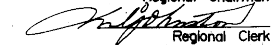
Legend

- BOUNDARY OF FIGURES
- SCHEDULE BOUNDARY
- ZONE BOUNDARY
-  BOUNDARY OF LANDS HAVING REFERENCE TO SECTION 37 OF THIS BY-LAW

*NOTE: According to Section 5.6 of this By-Law, all lands within the R3, R4, R5, R6, CG, CS, CN, CH, CHA, CR, CM, MG, ML, MM, MR, MD, MX, MS, IC, IN, IR, OS, OST, & HL zones are site plan control areas by By-law No. 751-HC/11

++NOTE: All Lands within the CS, CH, CR, MG, ML and MR zones of Zoning By-Law 1-DU 80 are subject to By-Laws 1050-HC/18 & 1052-HC/18 which permits the use of a Scrap Material Collection Bin for a period of up to two (2) years expiring on Feb 12, 2020

This is Schedule "A10" to By-law, 1-DU 80 passed the 14 th day of August 1980


Regional Chairman

Regional Clerk

OFFICE CONSOLIDATION
February 2019

